

Ethiopian Meteorology Institute

Health-Meteorology Bulletin

**The product of
Biometeorology and
insurance desk**

Dekadal Bulletin

Volume: 6

No; 17

Issued data: 21/06/2026

Valid until: 10/07/2026

June, 2026

**©Ethiopian Meteorology
Institute**

Tell: 251(0)11 6615779

Fax: 251(0)11 6625292

P.O.Box 1090

Website:

<http://www.ethiomet.gov.et/>

Telegram:

<https://t.me/BiometService>



I. Foreword

This "Climate Information for the Health Sector" Bulletin has been designed to convey essential information regarding the monitoring of human comfort conditions based on the analysis of temperature and humidity data and also for the monitoring of Malaria outbreak areas based on the analysis of temperature and precipitation data. Since the monitoring of temperature and rainfall over a given area can be used to assess the likelihood of outbreak of Malaria with a lag of two months, this information can be an important for early warning tool if used judiciously.

The major objective of this bulletin is in line with the Ethiopia Meteorological Institute strategy of diversifying climate application products to the basic developmental sectors (such as the Health, the water, the agricultural sector etc...). This bulletin can be a very important source of information to Health professionals engaged in the monitoring of Public Health, to Tourism Agents and institutions who advise tourists regarding the comfort conditions of the places to be visited by the tourists and to the researcher who is interested in the field of Bio-Climatology.

We have the opinion that careful and continuous use of this bulletin can benefit to the improvement of early warning and preparedness in the Health sector.

Meanwhile, your comments and constructive suggestions are highly appreciated to make the objective of this bulletin a success,

This same bulletin can be accessed online at:

http://www.ethiomet.gov.et/bulletins/health_bulletins

Director General
Ethiopia Meteorology Institute
P.O.Box 1090
Tel: 251(0)11 6615779
FAX 251(0)11 6625292
Web: www.ethiomet.gov.et
Addis Ababa, Ethiopia

II. Assumptions

i. Malaria: According to the International Research Institute for Climate and Society, (IRI), the predicted conditions of rainfall, temperature, and relative humidity are used in determining the degree of incidence for malaria.

- When rainfall is above 80 mm, the temperature is between 25°C and 32°C, and relative humidity is greater than 80%, the region is at high risk and is placed under high incidence.
- When the temperature is between 20°C and 25°C, relative humidity is between 70 and 80%, and rainfall is above 80 mm, then moderate incidence is advised.
- Low incidence for malaria is issued when the temperature is in the range of 18°C-20°C, relative humidity is 60 - 70% and rainfall is above 80 mm.
- No incidence is required when the temperature is less than 18°C, relative humidity less than 60%, and rainfall amount below 80 mm.

Based on these, climate variables have **a one to two months** postponed (delayed) effect on the spread of malaria.

ii. Human heat index: is a measure of how hot it feels when relative humidity is factored with the actual air temperature. The levels of caution for heat index are classified as follows:

- Cold stress when THI is <14, ***Asthma, Pneumonia, Common Cold and flu***
- Comfortable when THI is 14-21, ***pleasanter***
- Moderate when THI is 21-26, ***No more effects***
- Heat stress when THI is >26, ***heat stroke, heat cramps, hyperthermia, respiratory and cardiovascular diseases***

iii. Cattle heat index: The climatic condition for Cattle is a measure that accounts for the combined effects of environmental temperature and relative humidity on cattle. The level of heat stress for cattle classified as follows:

- Not Stressed when THI is <68, ***free from heat stress***
- Stressed threshold when THI is 68 – 71, ***impact less stress starting***
- Mild stress when THI is 72 – 79, ***stress begins and calf rate affected***
- Moderate stress when THI is 80 – 89, ***Milk production affected***
- Severe stress when THI is 90 – 99, ***very significant losses in milk production***
- Extremely stress when THI is >100, ***ultimate dead of cows***



1. Weather Impact Assessment on Health for Second dekad of June 2026



1.1 June 2026 Second dekad Malaria prone areas

The climatic conditions for malaria breeding and transmission, during the second ten days of June 2026 were experienced low to moderately suitable climate condition over some western parts of the country. Zones like Dawro, Konta, Halaba, Tembaro, Silitie, Guraghe, Kefa, Bench Sheko, Sheka, Majang, Jimma, Illu Aba Bora, All Wellega zones, Buno Bedelle, Southwest and West Shewa, Assossa, Metekel, Kamashi, West and North Gojam, Awi and West Gonder are some of the areas that was suitable for malaria breeding and transmission as illustrated in figure 1

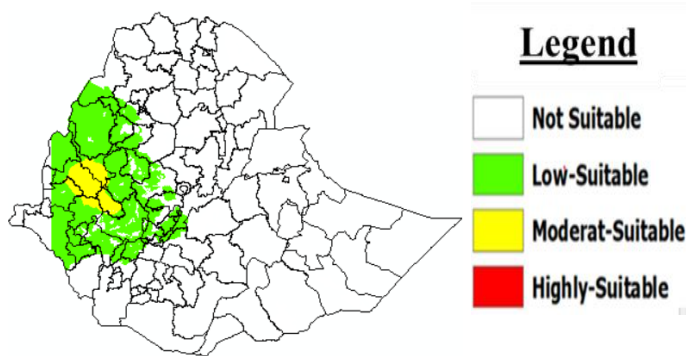


Figure 1: Malaria Prone areas

1.2.1 Comfortability for Human

For the daily activity of human beings, the weather during June second dekad of 2026 was observed from comfortable to fully uncomfortable weather condition. Heat-stress conditions was prevailed over Afar, Gambela, Quara-Metema, Metekel, Arba-Minch, Metehara and Southern and Norther Somali region, while in the rest most parts of the country were very pleasant as shown in figure 2.

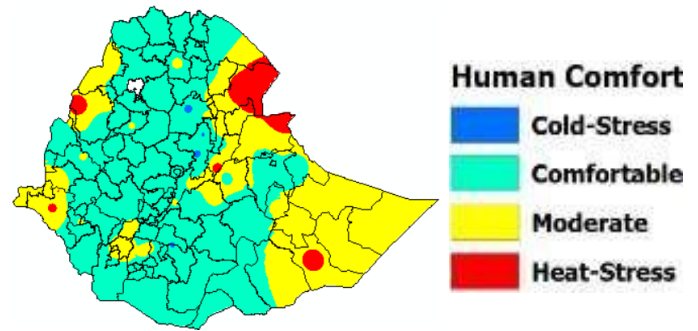


Figure 2: Human comfort index

1.2.2 Comfortability for Cattle

Unlikely human comfort, there was no significant heat stress conditions affecting cattle production and productivity. However, as illustrated in Figure 3, moderately heat stress conditions occurred in some border parts of the Afar, and northern Somali.

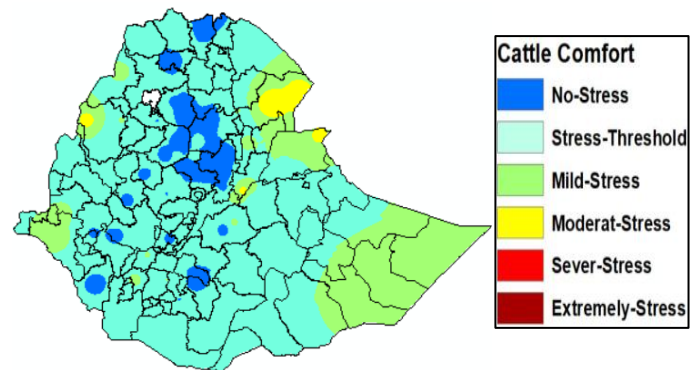


Figure 3: Cattle Comfort index

2. Expected Weather Impact on Health for Third dekad of June 2026



2.1 Expected Mosquito breeding areas

In the Coming third dekad of June 2026, weather conditions will be suitable for malaria breeding and transmission over all zones of Wollega, , Ilu Aba Bora, some pocket areas of Bale and Arsi zones, Buno Bedele and Jimma zones in Oromia, Bench Sheko, Sheka, Kefa, Dawro, and Konta in Southwest Ethiopia; Wolayita, Gofa, Basketo, and Amaro in South Ethiopia; most zones of Central Ethiopia; Majang zone in Gambela, All zones of Benishangul Gumuz, Western, Norther, Central Gonder, West, East, North Gojam, Awi, and a few woredas of South Gonder. Conversely, as shown in Figure 4, the rest of the country will experience weather conditions unsuitable for the breeding and transmission of malaria.

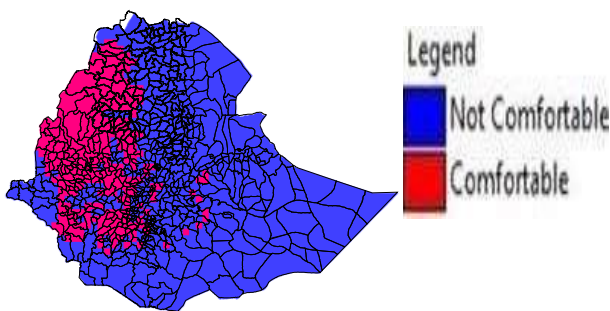


Figure 4: Expected malaria prone

2.1 Temperature Humidity Index

2.2.1 Human Comfort Condition

For the Coming third dekad of June 2026, most parts of Afar, South Ethiopia, western Amhara, and Tigray, Southern Somali and Gambela regions will be partially to fully uncomfortable for human daily activities, indicating possible signs of heat stress, as shown in Figure 5.

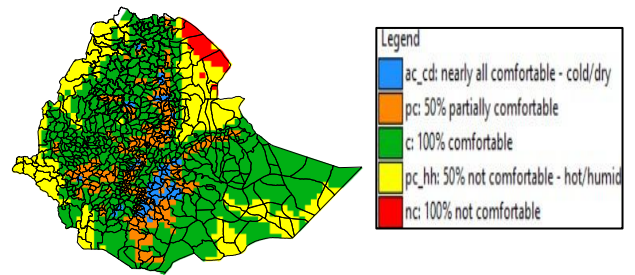


Figure 5: Expected Human

2.2.2 Cattle Comfort Condition

Cattle are expected to experience mild to moderate heat stress over most lowland areas of Afar, Somali, Gambella, South Ethiopia, Benishangul-Gumuz, and the western parts of the Amhara and Tigray regions in the coming third dekad of June 2026 as illustrated in figure 6 below.

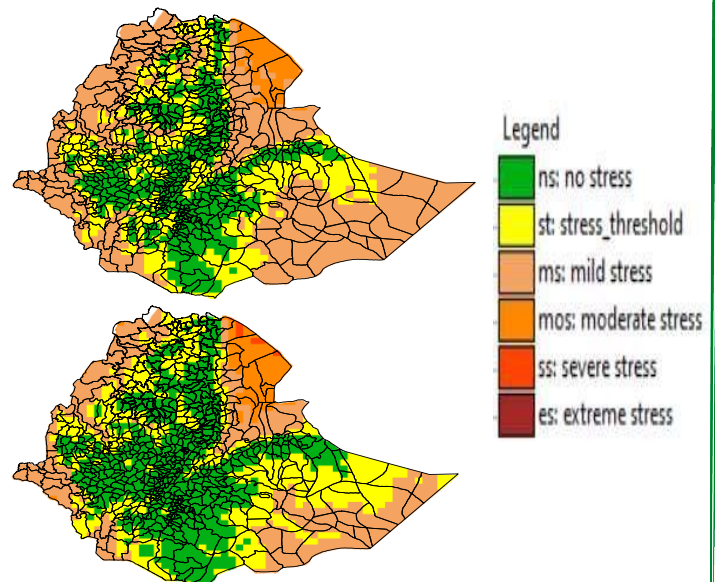


Figure 6: Expected Dairy (Top) and Non-Dairy (Bottom) Cattle comfort



3. Summary

As of the June 2026 2nd and 3rd dekad climate information, some western parts of the country are suitable for malaria transmission. Therefore, western Oromia, Benishangul, and some parts of western Amhara are under suitable conditions for malaria breeding and transmission.

However, significant heat stress conditions exist in the low-lying border areas of the eastern, northeastern, western, and southern parts of Ethiopia, particularly in the Afar, Gambela, Somali, Western Amhara, and Benishangul Gumuz, which affect human daily activity.

4. Advisory



Use and implement the following recommendations in places that are favourable for the development of malaria and other vector-borne related diseases;

- Attention to any incidence, especially for malaria disease in such favourable areas
- Controlling measures and activity are advised
- Reducing the environmentally aggravating condition
- Awareness creation campaign to the community and sharing of the climate-health update
- Avoid any exposure of the community to mosquitoes by ensuring clean environment and using Mosquitoes nets.

