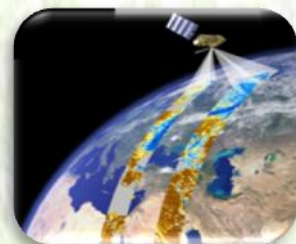


ETHIOPIA METEOROLOGICAL INSTITUTE

Agrometeorological Bulletin

SEASONAL AGROMETEOROLOGICAL BULLETIN

BEGA 2025/26 VOLUME 42 No. 03 DATE OF ISSUE: - February 8, 2026



Ethiopian Meteorological Institute P.O.BOX 1090, ADDIS ABABA, ETHIOPIA

Website: [http:// www.ethiomet.gov.et](http://www.ethiomet.gov.et) E-mail emi@ethiomet.gov.et Fax 251-1-517066, Tel. 251-1-512299

TABLE OF CONIENTS

FOREWARD	2
SUMMARY.....	7
1. WEATHER ASSESSMENT	11
1.1.Rainfall amount (21 – 31) January 2026.....	11
1.2.Rainfall Anomaly (21 – 31) January 2026	12
1.3.Moisture status (21 – 31) January 2026.....	13
1.4.Rainfall amount on the month of January 2026	14
1.5.Rainfall Anomaly on the month of January 2026.....	14
1.6.Moisture status on the month of January 2026.....	15
1.7.Rainfall Amount on Bega season 2025/26.....	16
1.8.Rainfall Anomaly on Bega Season 2025/26.....	17
2. AGROMETEOROLOGICAL CONDITIONS AND IMPACT ON AGRICULTURE.....	19
2.1.VEGETATION CONDITION AND IMPACT ON AGRICULTURE DURING BEGA, 2025/26.....	19
2.2.EXPECTED WEATHER IMPACT ON AGRICULTURE DURING THE COMING BELG, 2026 SEASON.....	20
3. DEFNITION OF TERMS	23

FOREWARD

This Agro met Bulletin is prepared and disseminated by the Ethiopia Meteorology Institute (EMI). The aim is to provide those sectors of the community involved in Agriculture and related disciplines with the current weather situation in relation to known agricultural practices.

The information contained in the bulletin, if judiciously utilized, are believed to assist planners, decision makers and the farmers at large, through an appropriate media, in minimizing risks, increase efficiency, maximize yield. On the other hand, it is vital tool in monitoring crop/ weather conditions during the growing seasons, to be able to make more realistic assessment of the annual crop production before harvest.

The institute disseminates ten daily, monthly and seasonal weather reports in which all the necessary current information's relevant to agriculture are compiled.

We are of the opinion that careful and continuous use of this bulletin can benefit to raise ones agro climate consciousness for improving agriculture-oriented practices. Meanwhile, your comments and constructive suggestions are highly appreciated to make the objective of this bulletin a success.

Director General

EMI

P.O. Box 1090

Tel: 011661-57-79

FAX 00251-11-6625292

E-mail emi@ethiomet.gov.et

Addis Ababa

አህፅሮት

እ.ኤ.አ በጋ 2025/26

በኢትዮጵያ ሚቲዎሮሎጂ ኢንስቲትዩት የወቅቶች አከፋፈል መሰረት የበጋ ወቅት ከጥቅምት እስከ ጥር ያለውን ጊዜ የሚያጠቃልል ሲሆን፣ በመደበኛ ሁኔታ ፀሐያማ፣ ደረቅ እና ነፋሻማ የአየር ፀባይ በአብዛኛዎቹ የሀገሪቱ አካባቢዎች ላይ የሚያመዝንበት እና አልፎ አልፎ ወቅቱን ያልጠበቀ ዝናብ የሚታይበት ጊዜ ነው። እንዲሁም በሰሜን ምስራቅ፣ በምስራቅ፣ በመካከለኛው እና በደቡብ ደጋማ አካባቢዎች ላይ ከፍተኛ ቅዝቃዜና የውርጫ ክስተት የሚስተዋልበት ወቅት ሲሆን በሌላ በኩል ይህ ወቅት ለደቡብ እና ደቡብ ምሥራቅ ቆላማ የሀገሪቱ አካባቢዎች ሁለተኛና አጭሩ የዝናብ ወቅታቸው ጭምር ነው። ከዚህ ምቹ የአየር ፀባይ ጋር ተያይዞ በአብዛኛው የመኸር አብቃይ በሆኑ አካባቢዎች የተለያዩ ሰብሎች እድገታቸውን የሚጨርሱበት ከመሆኑ ጋር ተያይዞ የሰብል ስብሰባና ድህረ ሰብል ስብሰባ ተግባራት በስፋት የሚካሄድበት ጊዜ ሲሆን በደቡብና በደቡብ ምሥራቅ የአርብቶ አደሩና ከፊል አረብቶ አደር አካባቢዎች ለግጥሽና ለመጠጥ ውሃ እንዲሁም መጠነኛ የሆነ እርሻ እንቅስቃሴ የሚካሄድበት ጊዜ ነው።

እ.ኤ.አ በአክቶበር ወር 2025 የነበረው የእርጥበት ሁኔታ በጋ ሁለተኛ የዝናብ ወቅታቸው በሆኑት በደቡብና ደቡብ ምስራቅ የሀገራችን አካባቢዎች በተለይም በቦረና፣ ጉጂ እና የደቡብ ክልል ደቡባዊ ዞኖች ለሚካሄደው የሰብል ልማት የማሳ ዝግጅት ለማድረግና ዘር ለመዝራት ምቹ ሁኔታ የፈጠረ ሲሆን በደቡብ ምዕራብና በምዕራብ አጋማሽ በሚገኙ የሀገራችን አካባቢዎች ተጨማሪ እርጥበት ለሚያስፈልጋቸው እና ፍሬ በመሙላት ላይ ለሚገኙ የመኸር ሰብሎች የውሃ ፍላጎታቸውን ከማሟላት አንጻር ከፍተኛ ጠቀሜታ ነበረው። በተጨማሪም በዚህ ወቅት የተገኘው እርጥበት በተለይም ለአርብቶ አደርና ከፊል አረብቶ አደር አካባቢዎች የግጥሽ ሳርና የመጠጥ ውሃ አቅርቦትን ከማሻሻል አንጻር ከፍተኛ ጠቀሜታ ነበረው። በሌላ በኩል በሰሜን፣ በሰሜን ምዕራብ፣ በሰሜን ምስራቅ፣ በምስራቅና በመካከለኛው የሀገሪቱ ክፍሎች ላይ የነበረው እርጥበት ዘግይተው ተዘርተው እድገታቸውን ላልጨረሱና ከመስከረም ወር መጀመሪያ ጀምሮ በአፈር ውስጥ በሚገኝ እርጥበት ለተዘፋ እንደ ሽንብራና ጻያ ላሉ የጥራጥሬ ሰብሎች፣ ለቋሚ ተክሎች፣ ለጓሮ አትክልቶችና ለፍራፍሬዎች የውሃ ፍላጎታቸውን ከማሟላት አንጻር አዎንታዊ ጎን ነበረው። በሌላ በኩል በሰሜን፣ ሰሜን ምዕራብ፣ ሰሜን ምስራቅና ምስራቅ እንዲሁም በአንዳንድ የመካከለኛው የሀገራችን አካባቢዎች የነበረው ደረቅ ሁኔታ ቀደም ብለው ለደረሱ የመኸር ሰብል ስብሰባና ድህረ ሰብል ስብሰባ የጎላ ጠቀሜታ ነበረው።

እ.ኤ.አ በኖቬምበር ወር 2025 በአብዛኛዎቹ የሀገሪቱ ክፍሎች ላይ የተስተዋለው የበጋው ደረቅ፣ ፀሐያማና ነፋሻማ የአየር ሁኔታ ለሰብል ስብሰባና ድህረ ሰብል ስብሰባ አመቺ ሁኔታን የፈጠረ ነበር።

በሌላም በኩል በደቡብ ምዕራብ፣ በምዕራብና በሰሜን ምራብ በአንዳንድ ቦታዎች ላይ የነበረው እርጥበት ሙሉ ለሙሉ እድገታቸውን ላልጨረሱ ሰብሎች፣ ለቋሚ ተክሎች፣ ለፍርፍሬ ተክሎችና ለጓሮ አትክልቶች የውሃ ፍላጎት መሟላት እንዲሁም በመኸር ወቅት መጨረሻ ላይ በአፈር ውስጥ በተከማቸው እርጥበት በመታገዝ ለሚዘሩ እንደ ጓደ እና ሽንብራ ለመሳሰሉ የጥራጥሬ ሰብሎች ጠቀሜታ ነበረው። በተጨማሪም በጋ ሁለተኛ የዝናብ ወቅታቸው በሆኑት በደቡብ አጋማሽ የሀገሪቱ ስፍራዎች በተለይም በተወሰኑ በደቡብ ክልል ደቡባዊ ዞኖች፣ በቦረናና ጉጂ ዞኖች ላይ የነበረው እርጥበት ቀደም ሲል ለተዘሩ ሰብሎች ምቹ ሁኔታን የፈጠረ ሲሆን በአርብቶ አደሩና ከፊል አርብቶ አደሮች አካባቢ ለግጥሽ ሳርና ለመጠጥ ውሃ አቅርቦት መሻሻልና የዝናብ ውሃን ለመሰብሰብና ለማከማቻት ገንቢ ሚና ነበረው። በአንጻሩ አልፎ አልፎ በተለይም በሰሜን፣ በሰሜን ምራብና በመጠኑ ሰብል በደረሰባቸው አካባቢዎች የነበረው ወቅቱን ያልጠበቀ እርጥበት በመጠኑም ቢሆን አሉታዊ ተፅእኖ ነበረው። ከደረቃማው የእርጥበት ሁኔታ ጋር ተያይዞ በአንዳንድ በሰሜን ምስራቅ፣ በመካከለኛው፣ በደቡብና ምስራቅ የሀገሪቱ ደጋማ ስፍራዎች ላይ የነበረው ቅዝቃዜ ከ5 ዲግሪ ሴልሽየስ በታች ሆኖ ተመዝግቧል። ይህም ሁኔታ በመስኖ በመታገዝ በሚለሙ በፍራፍሬ ተክሎችና በጓሮ አትክልቶች ላይ መጠነኛ አሉታዊ ጎን ነበረው።

እ.ኤ.አ በዲሴምበር ወር 2025 በተለይም በመጀመሪያውና በሁለተኛው አስር ቀናት በአብዛኛው የሀገሪቱ ስፍራዎች ላይ የነበረው የበጋው ደረቃማ የእርጥበት ሁኔታ የደረሱ ሰብሎች እንዲደርቁ፤ በጊዜ እንዲሰበሰቡና የድህረ ሰብል ስብሰባ ተግባራትን ለማከናወን ምቹ ሁኔታ ነበረው። በሌላ መልኩ በአንዳንድ የሰሜን፣ የመካከለኛውና የደቡብ ምስራቅ የሀገሪቱ ደጋማ ስፍራዎች ላይ ከቀኑ ዝቅተኛ የሙቀት መጠን የተነሳ የሌሊትና የማለዳው ቅዝቃዜ ከ5 ዲግሪ ሴልሽየስ በታች ሆኖ ሲመዘገብ በተወሰኑ ጥቂት ቦታዎች ላይ ደግሞ ከኬሮ ዲግሪ ሴልሽየስ በታች ሆኖ ተመዝግቧል። ይህም የተስተዋለው ቅዝቃዜ በተለይም በመስኖ በመታገዝ በሚለሙ የፍራፍሬ ተክሎችና በጓሮ አትክልቶች ላይ በጥቂት ቦታዎች ላይ በተወሰነ መጠን አሉታዊ ጎን ነበረው። በሌላ በኩል በዲሴምበር የመጨረሻዎቹ አስራ አንድ ቀናት አልፎ አልፎ ከነበረው የደመና ሽፋን በደቡብ፣ ደቡብ ምዕራብ፣ ደቡብ ምስራቅና በመካከለኛው አንዳንድ ቦታዎች ላይ ከቀላል እስከ መካከለኛ መጠን ያለው እርጥበት ተመዝግቧል። ይህም ሁኔታ ሙሉ ለሙሉ እድገታቸውን ላልጨረሱ አንዳንድ ሰብሎች፣ ለቋሚ ተክሎች፣ ለአትክልቶችና በመኸር ወቅት መጨረሻ ላይ በአፈር ውስጥ በተከማቸው እርጥበት በመታገዝ ለተዘሩ የሽንብራና ጓደ ለመሳሰሉ የጥራጥሬ ሰብሎች፣ ለእንስሳት የግጥሽ ሳርና የመጠጥ ውሃ አቅርቦት ላይ የተገኘው እርጥበት ጠቀሜታ ነበረው። በሌላ በኩል በሰሜን ምስራቅ አንዳንድ አካባቢዎች ወቅቱን ያልጠበቀ ዝናብ የነበራቸው ሲሆን ይህም ሁኔታ ለደረሱና በመሰብሰብ ሂደት ውስጥ ለነበሩ ሰብሎች አሉታዊ ጎን ነበረው በተለይም በደቡብ ወሎ ዞን ሰከላ ወረዳ እና በደብረ ማርቆስ በረዶ ቀላቅሎ በጣለው ዝናብ በደረሱ ሰብሎች ላይ ጉዳት አድርጏል።

እ.ኤ.አ በጃንዋሪ ወር 2026 በተለይም በመጀመሪያው በሁለተኛው አስር ቀናት ደረቃማው የእርጥበት ሁኔታ በአብዛኛው የሀገሪቱ ክፍሎች ላይ አመዝኖ እንደነበር የተነተኑ የግብርና ሚኒስቴሮች መረጃዎች ያመለክታሉ። ይህም ሁኔታ ለድህረ ሰብል እና ለእንስሳት መኖ ስብሰባ ተግባራትን በተሟላ መልኩ ለማከናወን በጎ ጎን ነበረው። በሌላ በኩል የሌሊትና የማለዳዉ ቅዝቃዜ በተለይም በአንዳንድ የሰሜን ምስራቅ፣ የመካከለኛው፣ የደቡብና የምስራቅ የሀገሪቱ ደጋማ ስፍራዎች ላይ አንጻራዊ ጥንካሬ እንደነበረውና ከአምስት ዲግሪ ሴልሽየስ በታች ሆኖ የተመዘገበ እንደነበር መረጃዎች አመለክተዋል። ይህም ሁኔታ በአንዳንድ ቅዝቃዜን መቋቋም በማይችሉ በመስኖ በሚለሙ የደጋ ሰብሎች፣ በቋሚ ተክሎችም ሆነ በጓጃ አትክልቶች ላይ አሉታዊ ተፅዕኖ ሊያስከትል የሚችል የቅዝቃዜ ሁኔታ ተስተውሏል። በሌላ በኩል በተለይም በመጨረሻዎቹ አሥራ አንድ ቀናት በደቡብ ምዕራብና በተወሰኑ የደቡብ የሀገሪቱ ኪስ ቦታዎች ላይ የነበረው መጠነኛ እርጥበት ለአርብቶ አደርና ከፊል አርብቶ አደር አካባቢዎች ለግጦሽ ሳርና ለመጠጥ ውሃ አቅርቦት በተወሰነ መልኩ አዎንታዊ አስተዋፅኦ የነበረው ሲሆን፤ በተጨማሪም የበልግ ወቅትን ቀድመው ለሚጀምሩ አካባቢዎች ማሳን አስቀድሞ ለማዘጋጀት ጠቀሜታ ነበረው።

በአጠቃላይ 2025/26 የበጋ ወራት የነበረው የእርጥበት ሁኔታ ሲገመገም የደቡብ አሮሚያ፣ መካከለኛው አሮሚያ፣ በአንዳንድ የሰሜን ምዕራብ፣ የምዕራብና የደቡብ ምዕራብ የሀገሪቱ ክፍሎች ላይ ከቀላል እስከ ከባድ መጠን የሚደርስ የእርጥበት ይዘት ነበራቸው። ይህም ተጠናክሮ የታየው እርጥበታማ ሁኔታ እድገታቸውን ላልጨረሱና በተለያዩ የእድገት ደረጃ ላይ ለሚገኙ የመኸር ሰብሎችም ሆነ ለቋሚ ተክሎች እድገት የሚያስፈልጋቸውን እርጥበት ከማሟላት አንጻር አዎንታዊ ሚና ነበረው። በተጨማሪም በጋ ሁለተኛ የዝናብ ወቅታቸው ለሆኑት የአርብቶ አደርና የከፊል አርብቶ አደር አካባቢዎች የግጦሽ ሳርና የመጠጥ ውሃ አቅርቦትን ከማሻሻል አንጻር አዎንታዊ ሚና የነበረው ሲሆን በተለይም በበረናና ጉጂ ዞኖች ለሚካሄደው መጠነኛ የሰብል ልማት እንቅስቃሴ ምቹ ሁኔታን የፈጠረ ነበር።

በተጨማሪም በበጋ ወራት በተለይም በአክቶበር ወር የተገኘው እርጥበት ውሃ አጠር ለሆኑ አካባቢዎች ውሃን ለመሰብሰብና ለማከማቸት መልካም አጋጣሚን የፈጠረ ነበር። በሌላ በኩል በሰሜን፣ በሰሜን ምዕራብ፣ በሰሜን ምስራቅና በመካከለኛው የሀገሪቱ ክፍሎች ላይ የነበረው እርጥበት ዘግይተው ተዘርተው እድገታቸውን ላልጨረሱ ከመስከረም ወር መጀመሪያ ጀምሮ በአፈር ውስጥ በሚገኝ እርጥበት ለተዘሩ እንደ ሽንብራና ጓያ ላሉ የጥራጥሬ ሰብሎች፣ ለቋሚ ተክሎች፣ ለጓጃ አትክልቶችና ለፍራፍሬዎች እንዲሁም በአረንጓዴ አሻራ ለተተክሉ የዛፍ ችግኞች የውሃ ፍላጎታቸውን ከማሟላት አንጻር ከፍተኛ ጠቀሜታ ነበረው። በአንጻሩ ግን በሰሜን፣ በሰሜን ምስራቅ፣ በምስራቅና በአንዳንድ የመካከለኛው የሀገራችን አካባቢዎች የነበረው ወቅቱን ያልጠበቀ ዝናብ በመኸር ሰብል ስብሰባና ድህረ ሰብል ስብሰባ ላይ በመጠኑም ቢሆን

አሉታዊ ተጽዕኖ የነበረው ሲሆን በተለይም በአንዳንድ የደቡብ ወሎ እና ደባርቅ ወረዳዎች በድሴምበር ወር በነበረው በረዶ በቀላቀለ ዝናብ ጋር ተያይዞ በደረሱ ሰብሎች ላይ ከፍተኛ ጉዳት አድርጓል። እንደሁም በአንዳንድ የደቡብ ሶማሌ አካባቢዎች የታየው የእርጥበት እጥረት በግጥሽ ሳር እና በመጠጥ ውሃ አቅርቦት ላይ አሉታዊ ተጽዕኖ ነበረው ። በተጨማሪም በተለይም የበጋው ወራት ማብቂያ በደቡብ ምዕራብና በተወሰኑ ኪስ ቦታዎች ላይ የነበረው መጠነኛ እርጥበት የበልግ እርሻ እንቅስቃሴን ቀድመው ለሚጀምሩ አካባቢዎች ማሳን አስቀድሞ ለማዘጋጀት በመጠኑም ቢሆን ጠቀሜታ የነበረው።

በሌላ በኩል ባሳለፍነው የበጋ ወራት የተስተዋለው የሌሊቱ እና የማለዳው ቅዝቃዜ በሰሜን ምስራቅ፣ በመካከለኛውና በምስራቅ የሃገሪቱ ደጋማ ስፍራዎች ላይ የቀኑ ዝቅተኛ የሙቀት መጠን በአንዳንድ አካባቢዎች ላይ ከ 5 ድግሪ ሴሊሽየስ በታች ሁኖ የተመዘገበ ሲሆን በተወሰኑ ቦታዎች ደግሞ ከዜሮ (0) ድግሪ ሴሊሽየስ በታች ሁኖ ተስተዋል። ይህም የተስተዋለው ቅዝቃዜ በእንስሳት ጤናና በመስኖ በመታገዝ በሚለሙ የፍራፍሬ ተክሎችና በጓሮ አትክልቶች ላይ መጠነኛ አሉታዊ ጎን ነበረው፡፡

SUMMARY

Bega 2025/26

During the month of October 2025 under review, according to the analyzed agro meteorological information, better moisture prevails over southern and south-eastern parts of the country. The observed enhanced moisture had positive implication for planting and required the daily water needs of Bega season crops particularly Borena, Guji and southern parts of southern region of the country of highlands and midlands also the observed improved moisture might be positive implication for pasture and drinking water and significantly important to regenerate natural and artificial ponds over both the southern and south-eastern pastoral and agro pastoral community where Bega is the second rain season. Additionally, the observed better rainfall over southern and south-eastern parts of the country had a good opportunity to collect rain water harvesting. Moreover the experienced rainfall over western half of the country had been favor the existing Meher crops, which were under different phenological phases and lately planted and currently found at various growing stages which requiring additional moisture for their further development, perennial plants, fruits and vegetables as well as it would have significant contribution for the production of pulse crops which planted at the end of the season with residual moisture. On the other hand, the observed dry condition in the northern, north-eastern, central and eastern parts of the country might have a positive implication for harvest and post-harvest activities of Meher crops..

During the month of November 2025, according to the analyzed agro meteorological information dry, sunny and windy weather conditions prevailed over most parts of Kiremt rain-benefiting areas of the country. This condition was favorable for harvest and post-harvest activities of fully matured Meher season crops. The observed enhanced moisture over western, north-western and south-western parts of the country had been favor the existing Meher crops, which are found from vegetative to grain filling stages toward attaining their water need for further growth and development, perennial plants, fruits and vegetables as well as it would have significant contribution for the production of pulse crops which planted at the end of the season with residual moisture. However, the receiving unseasonal moisture over northern, north-western and western parts might have slightly negative impact for matured crops. Similarly, since Bega is the second rainy season for the southern and south-eastern parts of the country, the received moisture during the month could play very crucial role to satisfy the water need of Bega season crops over Borena, Guji and southern parts of southern region high lands. Moreover, the condition had positive impact for improving the availability of pasture and drinking water and the enhanced moisture had a good opportunity to collect rain water harvesting over both the pastoral

and agro pastoral community. On the other hand, the decrease in minimum temperature over the highlands of southern, central, eastern and northeastern frost prone areas recorded below 5⁰ C. This night and early morning extreme cooling condition negatively affected late sown crops not yet attain maturity and vegetable grown under irrigation and found at different phase of growth.

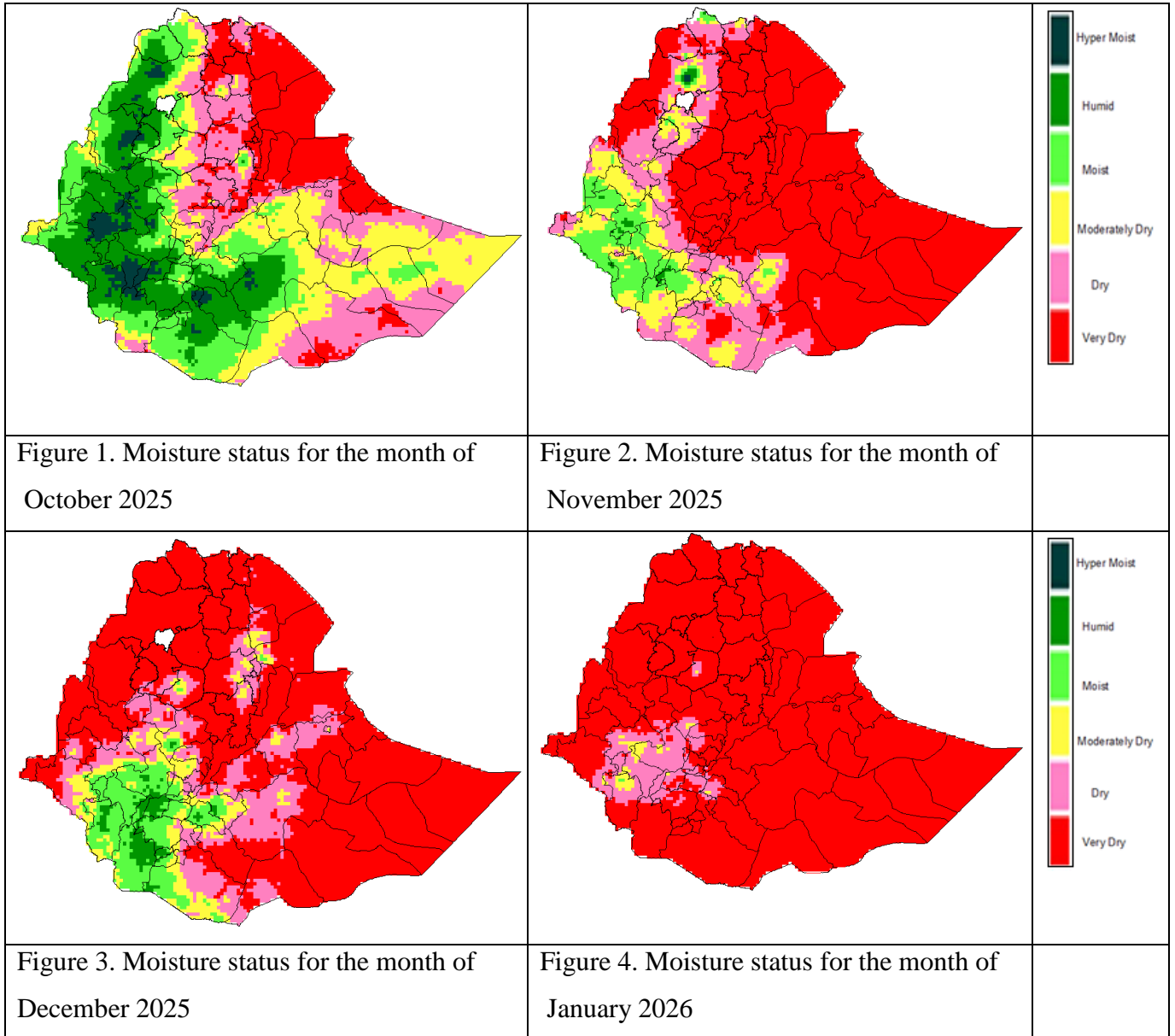
During the month of December 2025, the Bega season dry, sunny and windy climate condition particularly in the first and second dekad of the month prevailed most parts of the country. The dry condition was favorable for the timely dry out of matured crops and to conduct harvest and post-harvest activities. In line with the dry condition some of the highland parts of northern, central, eastern and north-eastern parts of the country recorded minimum temperatures below 50C. This cold and chill condition might have some negative impact on livestock health, irrigated Bega season crops and over various horticulture plants. However, during the last dekad of December light to moderate moisture was recorded over southern, south-western, eastern and central parts of the country. This condition favors toward the water satisfaction of not fully matured crops, perennial plants, for various horticulture crops and for some of legumes which often planted after harvest of Meher crops. In addition, it might have positive impact on ensuring the availability of pasture and drinking water over pastoral and agro pastoral areas. On the other hand, the received unseasonal moisture over some Meher producing areas particularly over South Wollo zone sekela woreda and Debre Markos area heavy rainfall combined with hailstorm might have slightly affected harvest and post-harvest activities of matured crops.

During the month of January 2026, Analyzed agrometeorological data indicates that dry weather conditions prevailed across most parts of the country, particularly throughout the first and second ten-day periods. This dry conditions were beneficial for fully executing post-harvest activities and the collection of animal fodder. On the other hand, reports show that nighttime and early morning cold remained relatively intense in the highlands of the Northeast, Central, South, and East, with recorded temperatures dropping below 5°C. This cold stress posed a potential negative impact on frost-sensitive irrigated highland crops, perennial plants, and backyard vegetables. Conversely, the light moisture observed during the final eleven days of the month in the Southwest and specific pockets of the South contributed positively to the supply of grazing pasture and drinking water in pastoral and semi-pastoral areas. Additionally, this moisture was useful for early land preparation in regions that begin their Belg season activities ahead of schedule.

In general, the moisture conditions during the 2025/26 Bega (dry season) ranged from light to heavy across Southern and Central Oromia, as well as parts of the Northwest, West, and Southwest regions of Ethiopia. This moisture played a positive role by fulfilling the water requirements of late-maturing Meher crops, perennial plants, and various vegetation stages. In pastoral and semi-pastoral areas where the Bega season serves as the second rainy season the moisture improved the availability of grazing grass and drinking water, specifically creating favorable conditions for small-scale crop cultivation in the Borena and Guji zones. Additionally, moisture received during October offered a vital opportunity for water harvesting and storage in water-scarce areas. In the North, Northeast, and Central regions, this moisture was highly beneficial for pulses like chickpeas and Guaya sown in residual soil moisture, as well as for fruits, vegetables, and tree seedlings planted under the Green Legacy Initiative.

Conversely, unseasonal rainfall in the North, Northeast, East, and certain Central areas had a slight negative impact on Meher crop harvesting and post-harvest activities. Significant damage to matured crops was reported in parts of South Wollo and Debark due to rain mixed with hail in December. In contrast, some areas of Southern Somali experienced a moisture deficit that negatively affected grazing land and water supplies. Toward the end of the Bega season, however, some moisture in the Southwest provided a slight advantage for early land preparation for the upcoming Belg season. Meanwhile, the season was also marked by extreme cold, with nighttime and early morning temperatures in the highlands of the Northeast, East, and Central regions dropping below 5°C, and in some cases, below 0°C. This cold stress had a minor negative impact on livestock health and the productivity of irrigated fruits and backyard vegetables.

Bega 2025/26 Moisture Status Map



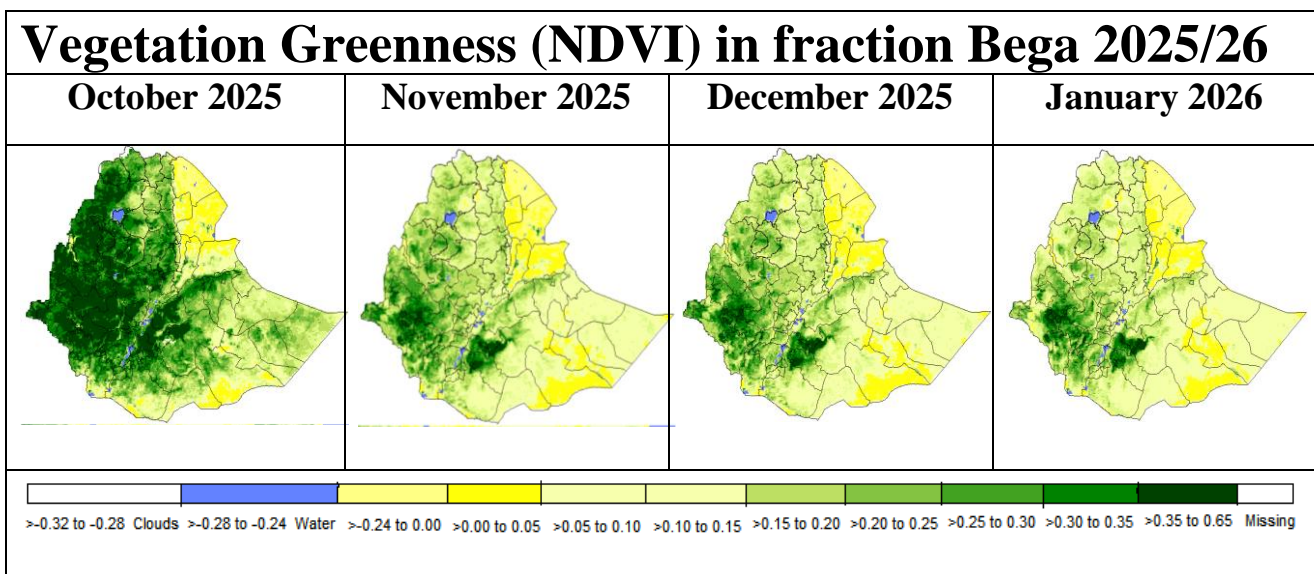


Fig. 5. Vegetation Greenness (NDVI) in fraction (October 2025 – January 2026)

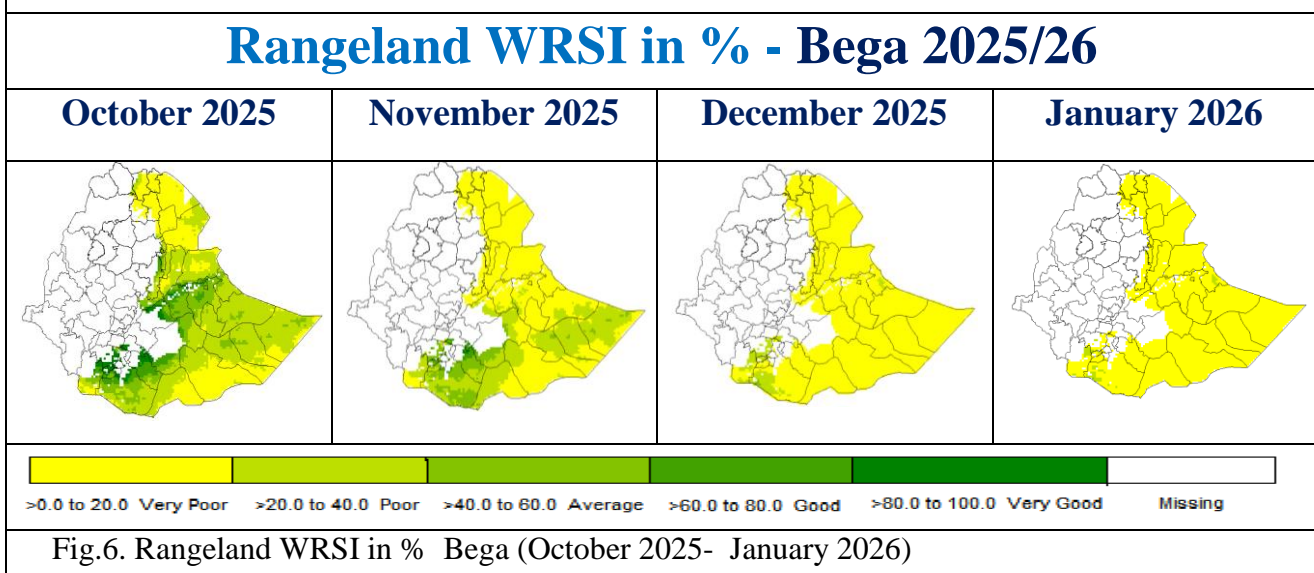


Fig.6. Rangeland WRSI in % Bega (October 2025- January 2026)

1. WEATHER ASSESSMENT

1.1. Rainfall amount (21 – 31) January 2026

During 3rd decade of January 2026 the rain fall distribution was some part of East Gojjam, South West Shewa, Illibabur, Jimma, Keffa, Dawero, Woliyta, Sidama and tip areas of Bench Maji and Sheka Zones are received 5-25 mm rainfall. On the other hand, the rest part of the country received <5 mm rain falls.

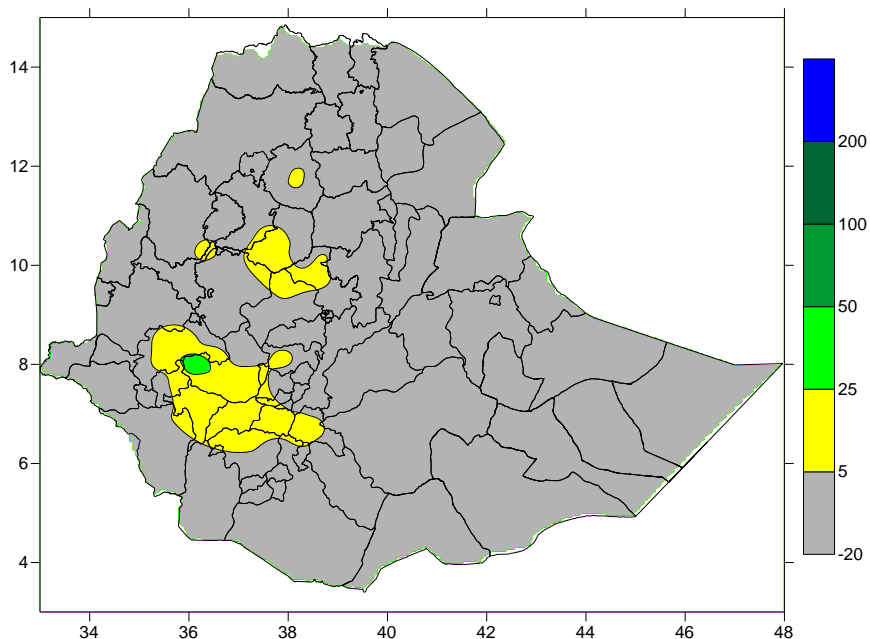


Fig 7. Rainfall distribution in mm (21 – 31) January 2026

1.2. Rainfall Anomaly (21 – 31) January 2026

During 3rd decade of January 2026 Percent of Normal rain fall distribution or compared to climatology of the rain fall distribution was some part of East Gojjam, South West Shewa, Tip areas of North Wollo, most part Illibabur, Jimma, Keffa, Dawero, Woliyta, Sidama Zones are exhibited Normal to Above Normal rainfall condition. on the other hand, the rest part of the country was exhibited Much Below Normal rainfall.

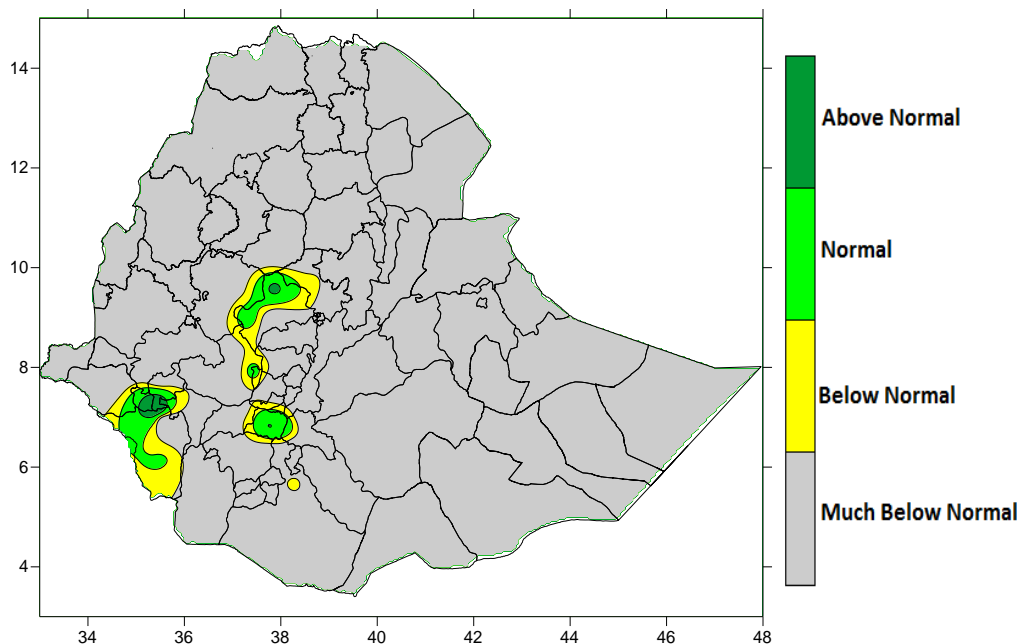


Fig. 8. Percent of normal rainfall distribution (21 – 31) January 2025

Explanatory notes for the Legend

- < 50-Much below normal
- 50-75%-Below normal
- 75-125%- Normal
- > 125% - Above normal

1.3. Moisture status (21 – 31) January 2026

During the third dekad of January 2026, some areas of south western parts of the country experienced Moderately Dry to Moist moisture conditions. The rest parts of the countries exhibited Dry to Very Dry.

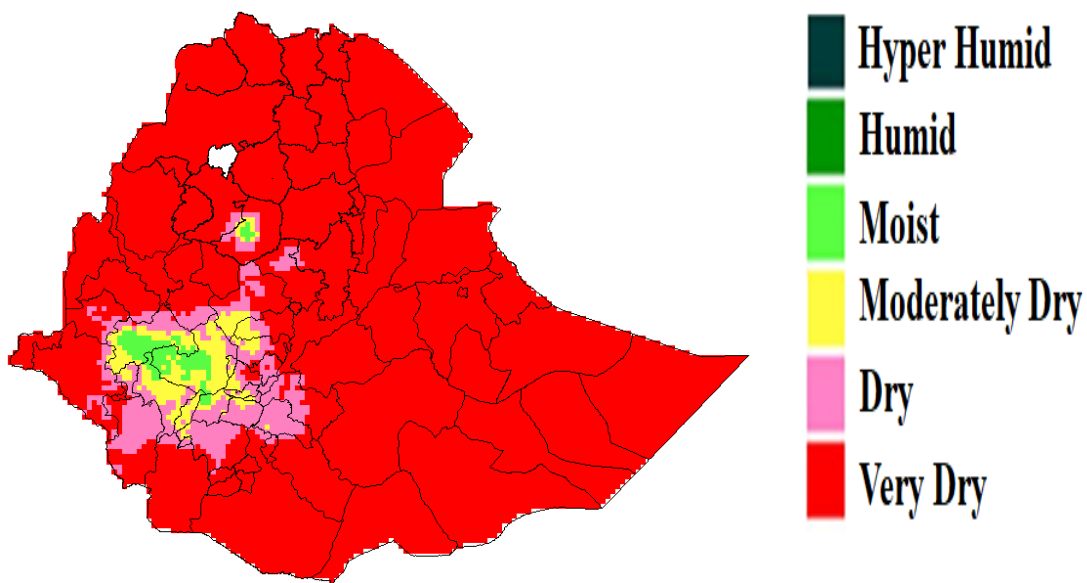


Fig.9. Moisture Status (21 – 31) January 2026

1.4. Rainfall amount on the month of January 2026

During the Month of January 2026, some parts of Basketo, Gamogofa, Sidama, Welayita, Dawuro, Keffa, Bench Maji, Sheka, Jimma and Gurage received 5-25 mm of rainfall. Other parts of the country were dominantly dry or less than 5 mm of rainfall conditions.

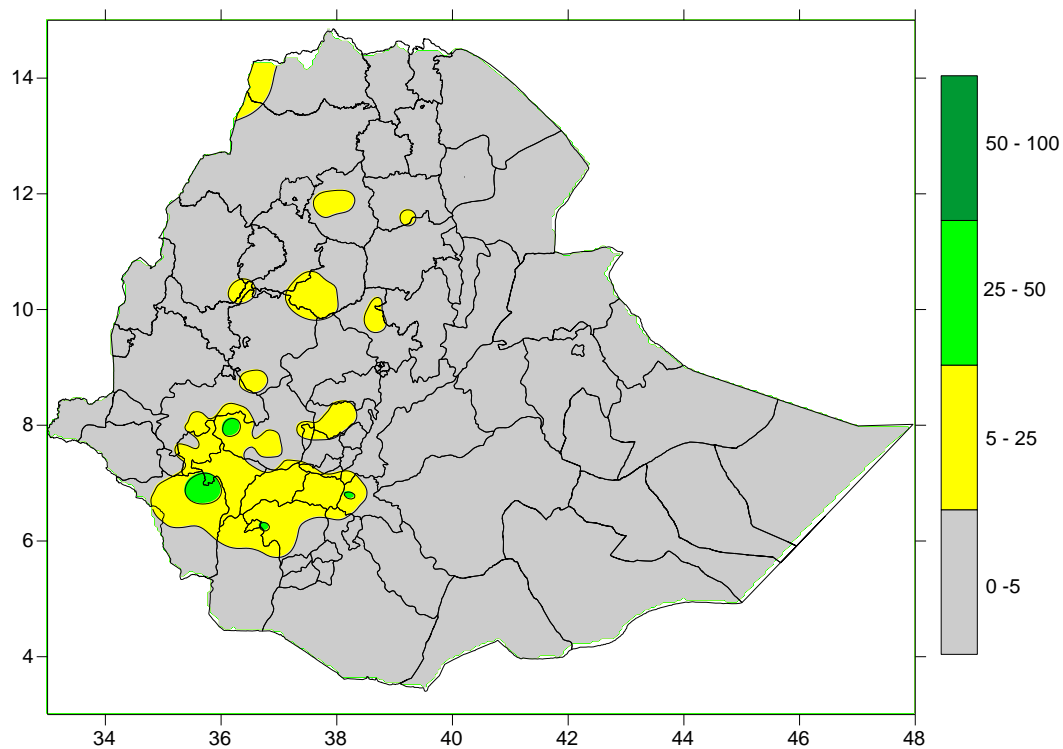


Fig. 10. Rainfall amount in mm for the month of January 2026

1.5. Rainfall Anomaly on the month of January 2026

During the month of January 2026, some pocket areas of Bench Maji, Gurage and East Gojam were exhibited Normal to Above Normal Rainfall condition. On the other hand, most parts of the country were experienced below Normal to Much Below Normal rainfall condition.

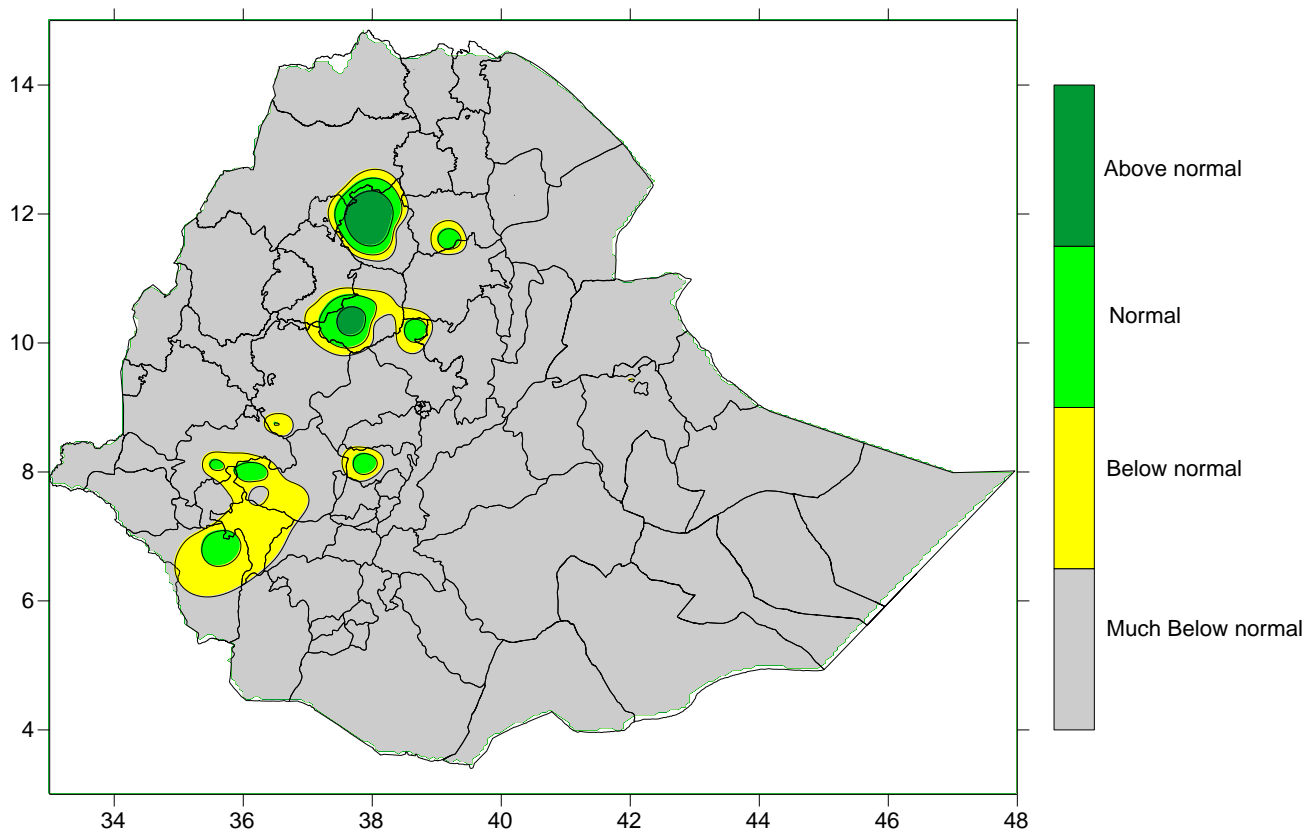


Fig. 11. Percent of Normal Rainfall for the month of January 2026

Explanatory notes for the Legend

- < 50-Much below normal
- 50-75%-Below normal
- 75-125%- Normal
- > 125% - Above normal

1.6. Moisture status on the month of January 2026

During the month of January 2026 Pocket Area of south western part of the country exhibited moderate to dry moisture condition. The rest parts of the countries experienced very dry.

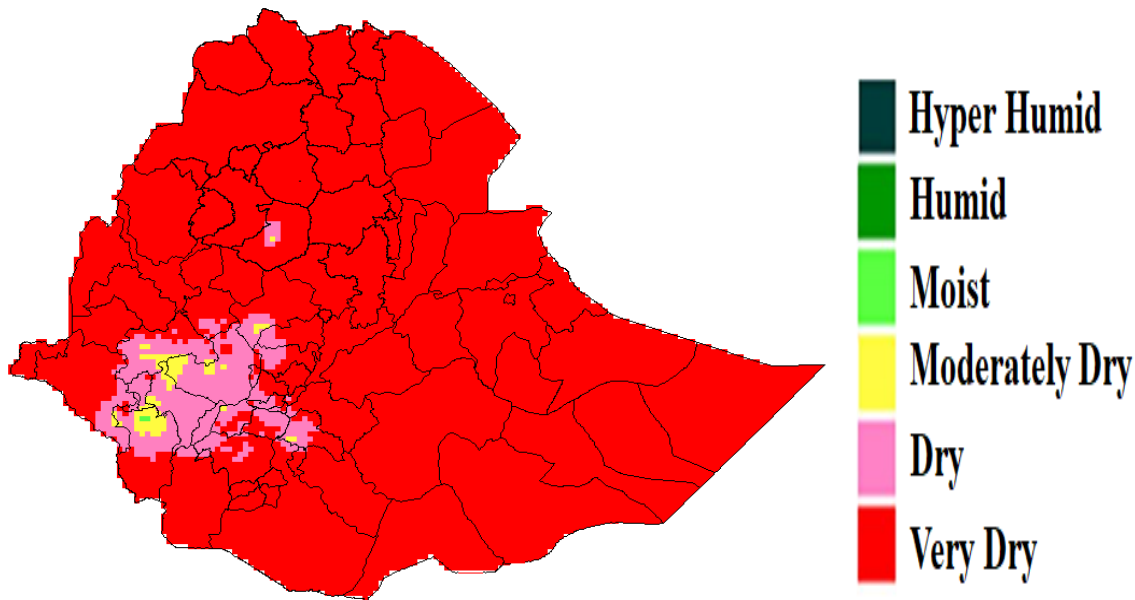


Fig. 12. Moisture status for the month of January 2026

1.7. Rainfall Amount on Bega season 2025/26

During the 2025/26 Bega Season, most some areas of west wellega and Illubabur were received from 400-500mm of rainfall. Over Basketo, Bench Maji, Illubabur and west Wellega was received 300 400 mm of rainfall. Borena, Derashe, south Omo, Keffa, Godere, Gambela zone 2, Jimma, Illubabur, Tongo and Metekel received 200-300 mm of rainfall. Over Liben, Afder, Bale, Gedeeo, Konso, Burji, Amaro, Gedeeo, Gamogofa, Dawuro, Welayita, Sidama, Gambela zone 2, east Wellega, Tongo, Assosa, Metekel, Agew, North Gonder, Korahe and Warder received 100-200 mm of rainfall. Over Gode, Deghabur, west Harergie, Alaba, Hadiya, Yem, Gurage, Gambela zone 3, north Shewa, Kamashi, east Gojjam and Bahirdar received 50-100 mm of rainfall. Over Guji, Selti, Arsi, south west Shewa, north Shewa, Harer, Fik and Oromia Special zone received 25 -50 mm. Over east Harergie, Jijiga, Afar zone 2, 3, & 5, east Shewa, Addis Ababa, south Tigray and west Tigray zones received 5 – 25 mm of rainfall. The rest parts of the country received 0 – 5 mm of rainfall.

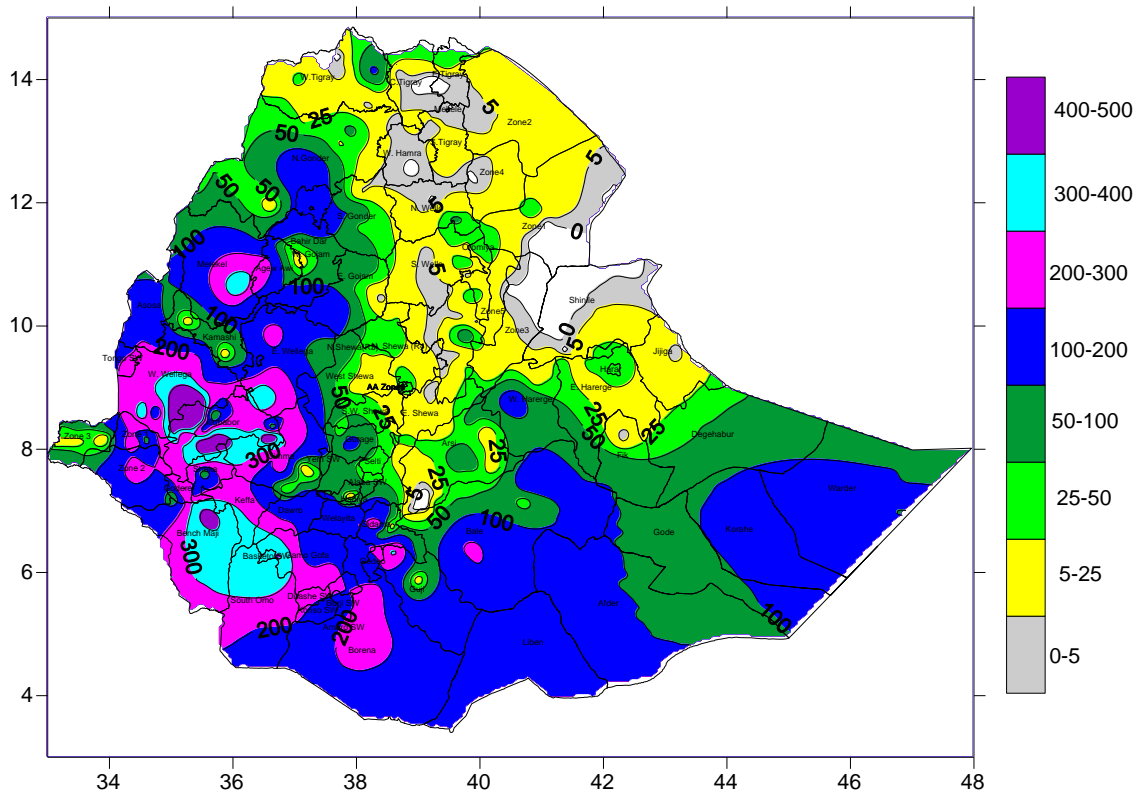


Fig.13. Rainfall amount in mm for Bega 2025/26

1.8. Rainfall Anomaly on Bega Season 2025/26

During the Bega 2025/26 season, Southern, South western, Western, North western and pocket areas of Afar exhibited Normal to Above Normal Rainfall condition. The other parts of the country were experienced below Normal to Much Below Normal rainfall condition.

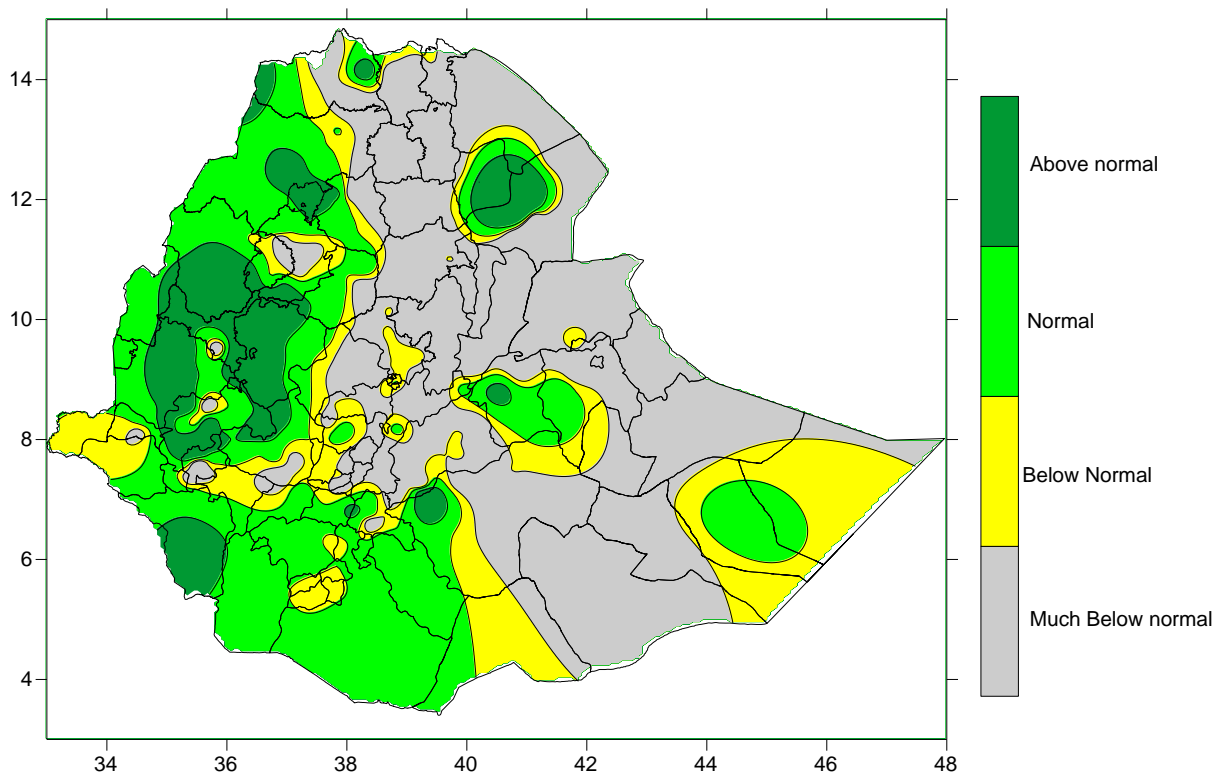


Fig.14. Percent of Normal Rainfall for Bega 2025/26

Explanatory notes for the Legend

- < 50-Much below normal
- 50-75%-Below normal
- 75-125%- Normal
- > 125% - Above normal

2. AGROMETEOROLOGICAL CONDITIONS AND IMPACT ON AGRICULTURE

2.1. VEGETATION CONDITION AND IMPACT ON AGRICULTURE DURING BEGA, 2025/26

Generally during the past Bega 2025/26 season due to the influence of Kiremt system the moisture condition existed over north Western, western, south western and central parts of the country, in particular during the month of October and November the moisture condition was enhanced over most part of the country. The observed moisture was favorable for the performances of Meher crops that are late sown and not yet fully matured, and perennial plants to satisfy the water requirement. Moreover, the southern Bega rain benefiting areas including southwestern, central, eastern and western parts of the country the NDVI Figure 5 (the green plant coverage) and RLWRSI Figure 6 increased in most of Bega rainfall benefiting areas. Particularly due to the expanded green plant coverage and Rangeland indicated over southern pastoral and agro pastoral community might play crucial role toward improving the availability of pasture and drinking water and to regenerate natural and artificial ponds.

2.2. EXPECTED WEATHER IMPACT ON AGRICULTURE DURING THE COMING BELG, 2026 SEASON

Belg season normally central parts of northern high lands, eastern highlands, part of central, south western and southern Ethiopia are known as Belg growing areas. The contribution of Belg rainfall is ranging from 5-30% over the north, north eastern and eastern highlands whereas 30-60% over south and south western parts of the country from annual total crop production of the areas.

For the upcoming Belg season of 2026, normal to above-normal moisture conditions are expected over areas of Belg crop growing and Belg rainfall benefiting areas, including pastoral, and agro-pastoral regions of the country. These conditions may lead both positive and negative impacts on Belg agricultural activities.

In particular, across the major Belg Growing areas of the southern and southwestern parts of the country namely Sidama Region, South Ethiopia Region, Central Ethiopia Region, and southern Oromia as well as in the northeastern and southeastern Belg growing areas, the anticipated normal to above-normal moisture conditions are likely to ensure enhance soil moisture for the land preparation and seasonal agricultural activities timely. This will be favorable for early agricultural activities during the Belg season.

Furthermore, these conditions are expected to support the water requirements of perennial crops and to improve the availability of drinking water and pasture for livestock over pastoral and agro-pastoral areas. In addition, favorable conditions are anticipated in western and northwestern Meher growing areas where long-cycle crops are planted earlier.

On the other hand, the expected normal to above-normal moisture conditions, particularly in Sidama, Wolaita, Gedeo, GamoGofa, Dawro, and Derashe zones, may lead to excessive soil moisture after the mid of the season. This may lead to waterlogging, soil erosion, landslides, and increased incidence of weeds and crop diseases.

furthermore, in southern Tigray, eastern Amhara, central Oromia, and eastern Oromia Belg growing areas, although normal to above-normal moisture conditions are expected, the Belg rainfall is expected to exhibit high temporal variability, including the likelihood of consecutive dry spells. Such conditions may negatively affect the availability of continuous soil moisture required for crop growth after planting.

Overall, considering both the positive and negative impact of the upcoming Belg season, the implementation of appropriate preparedness, risk-mitigation measures and properly use the Agromet advisories is essential.

Positive Impacts

- 🌱 Normal to above-normal moisture conditions will ensure adequate soil moisture availability.
- 🌱 The expected good moisture conditions will be favorable for land preparation and planting activities timely.
- 🌱 Both Belg seasonal crops and perennial crops will be able to obtain sufficient moisture required for proper growth and development.
- 🌱 Favorable conditions will be created for the collection and storage of rainwater to use during the dry spells.
- 🌱 The conditions will support the implementation of soil and water conservation practices.
- 🌱 Improved availability of drinking water and feed for livestock, as well as enhanced pasture growth, is anticipated.
- 🌱 In Meher-producing areas, the conditions will be favorable for early planting of long-cycle crops.

Negative Impacts

- 🌱 Due to the likelihood of above-normal moisture may lead to waterlogging, soil erosion, and landslide that may affect Belg agricultural activities over particularly in sloping terrains.
- 🌱 Increased weed infestation, crop diseases, and pest outbreaks may negatively affect crop productivity.
- 🌱 In particular, in the northern, eastern, and central Belg-producing areas of the country, the occurrence of consecutive dry spells associated with rainfall variability may adversely affect crop germination and growth stages.

Agrometeorological Advisory

- 🌱 To reduce moisture stress during dry spells, rainwater harvesting and storage practices should be implemented.
- 🌱 In pastoral and agro-pastoral areas, fodder and pasture resources should be conserved and stored for use during dry periods.

- In areas where excessive moisture is expected, appropriate drainage systems should be prepared to minimize waterlogging.
- Soil and water conservation measures should be strengthened.
- Proper crop selection will have promoted that crop varieties suitable for the season
- Planting dates should be determined in line with the climate information and appropriate preparations should be made.
- Crop fields should be closely monitored throughout the season.
- Agricultural inputs (including herbicides, pesticides, and fertilizers) should be applied carefully, taking prevailing and expected weather conditions into account.
- Regularly updated weather and climate information issued by the Institute should be closely followed, and the corresponding advisories should be implemented accordingly.

3. DEFINITION OF TERMS

ABOVE NORMAL RAINFALL: - Rainfall in excess of 125% of the long term mean

BELOW NORMAL RAINFALL: - Rainfall below 75 % of the long term mean.

NORMAL RAINFALL: - Rainfall amount between 75 % and 125 % of the long term mean.

BEGA: - It is characterized with sunny and dry weather situation with occasional falls. It extends from October to January. On the other hand, it is a small rainy season for the southern and south eastern lowlands under normal condition. During the season, morning and night times are colder and daytime is warmer.

BELG: - Small Rainy season that extends from February to May and covers southern, central, eastern and north-eastern parts of the country.

CROP WATER REQUIREMENTS: - the amount of water needed to meet the water loss through evapotranspiration of a disease free crop, growing under non-restricting soil conditions including soil water and fertility.

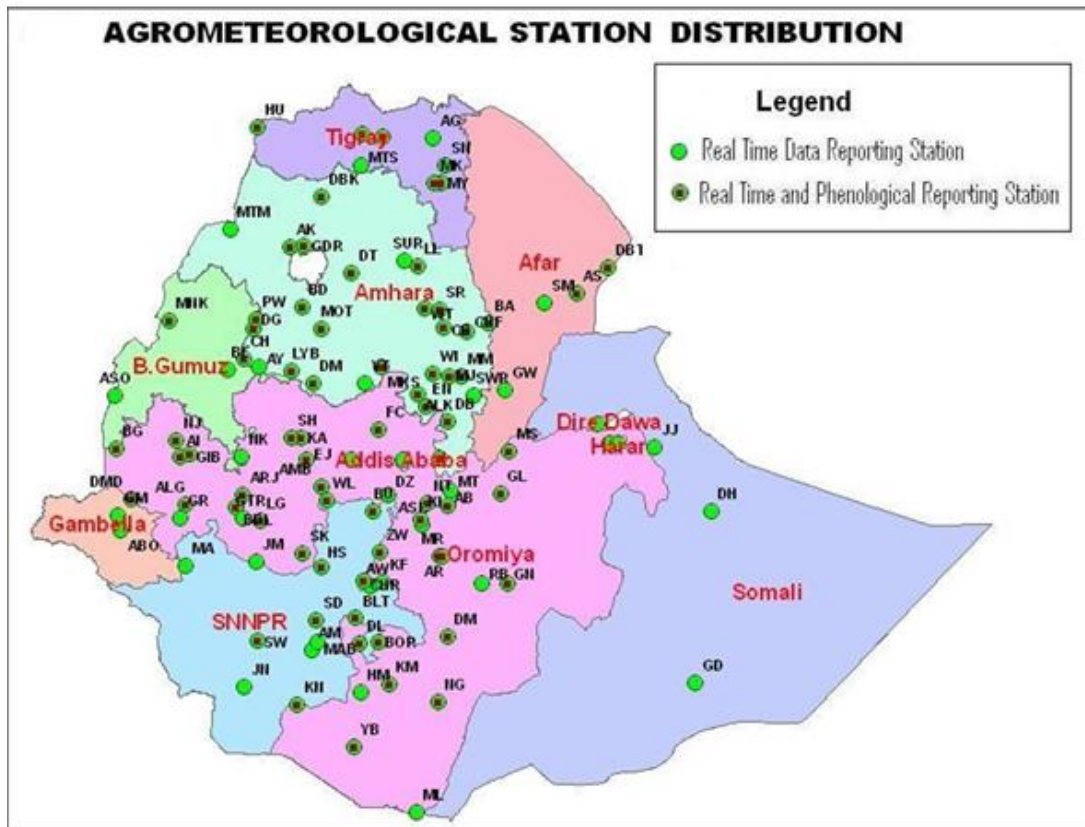
DEKAD: - First or second ten days or the remaining days of a month.

EXTREME TEMPERATURE: - The highest or the lowest temperature among the recorded maximum or minimum temperatures respectively.

ITCZ: - Inter-tropical convergence zone (narrow zone where trade winds of the two hemispheres meet.

KIREMT: - Main rainy season that extends from June to September for most parts of the country with the exception of the south-eastern lowlands of the country.

RAINY DAY: - A day with 1 or more mm of rainfall amount



Station	Code	Station	Code	Station	Code	Station	Code
A. Robe	AR	D. Zeit	DZ	Humera	HU	Nazereth	NT
A.A. Bole	AA	D/Dawa	DD	Jijiga	JJ	Nedjo	NJ
Adigrat	AG	D/Mena	DOM	Jimma	JM	Negelle	NG
Adwa	AD	D/Odo	DO	Jinka	JN	Nekemte	NK
Aira	AI	D/Tabor	DT	K.Dehar	KD	Pawe	PW
Alemaya	AL	Dangla	DG	K/Mingist	KM	Robe	RB
AlemKetema	ALK	Dilla	DL	Kachise	KA	Sawla	SW
Alge	ALG	Dm.Dolo	DMD	Koffele	KF	Sekoru	SK
Ambo	AMB	Dubti	DBT	Konso	KN	Senkata	SN
Arba Minch	AM	Ejaji	EJ	Kulumsa	KL	Shambu	SH
Asaita	AS	Enwary	EN	Lalibela	LL	Shire	SHR
Asela	ASL	Fiche	FC	M.Meda	MM	Shola Gebeya	SG
Assosa	ASO	Filtu	FL	M/Abaya	MAB	Sirinka	SR
Awassa	AW	Gambela	GM	Maichew	MY	Sodo	SD
Aykel	AK	Gelemso	GL	Majete	MJ	WegelTena	WT
B. Dar	BD	Ginir	GN	Masha	MA	Woliso	WL
Bati	BA	Gode	GD	Mekele	MK	Woreilu	WI
Bedelle	BDL	Gonder	GDR	Merraro	MR	Yabello	YB
BUI	BU	Gore	GR	Metehara	MT	Ziway	ZW
Combolcha	CB	H/Mariam	HM	Metema	MTM		
D. Berehan	DB	Harer	HR	Mieso	MS		
D. Habour	DH	Holleta	HL	Moyale	ML		