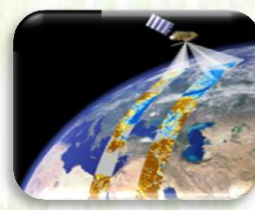


# **ETHIOPIAN METEOROLOGICAL INSTITUTION**

## **Agrometeorological Bulletin**

### **TEN DAY AGROMETEOROLOGICAL BULLETIN**

**11-20 JANUARY 2065 VOLUME: - 43 No. 02 DATE OF ISSUE: - JANUARY 23, 2026**



Ethiopia Meteorology Institute P.O.BOX 1090, ADDIS ABABA, ETHIOPIA

Website: [http:// www.ethiomet.gov.et](http://www.ethiomet.gov.et) E-mail [nmsa@ethionet.et](mailto:nmsa@ethionet.et) Fax 251-1-517066, Tel. 251-1-512299

## **TABLE OF CONTENTS**

<b>FOREWARD .....</b>	<b>2</b>
<b>SUMMARY .....</b>	<b>3</b>
<b>1.1. Rainfall amount (11 – 20 January, 2026) .....</b>	<b>4</b>
<b>1.2. Rainfall Anomaly (11 – 20 January, 2026).....</b>	<b>5</b>
<b>1.3. Moisture Condition (11 – 20 January, 2026) .....</b>	<b>6</b>
<b>2. AGROMETEOROLOGICAL CONDITIONS AND IMPACT ON AGRICULTURE.....</b>	<b>7</b>
<b>2.1. VEGETATION CONDITION AND IMPACT ON AGRICULTURE .....</b>	<b>7</b>
<b>2.2. EXPECTED WEATHER IMPACT ON AGRICULTURE DURING THE         COMING THIRD DEKADE OF JANUARY 2026 .....</b>	<b>8</b>
<b>3. DEFNITION OF TERMS.....</b>	<b>9</b>

## FOREWARD

This Agro met Bulletin is prepared and disseminated by the Ethiopia Meteorology Institute (EMI). The aim is to provide those sectors of the community involved in Agriculture and related disciplines with the current weather situation in relation to known agricultural practices.

The information contained in the bulletin, if judiciously utilized, are believed to assist planners, decision makers and the farmers at large, through an appropriate media, in minimizing risks, increase efficiency, maximize yield. On the other hand, it is vital tool in monitoring crop/ weather conditions during the growing seasons, to be able to make more realistic assessment of the annual crop production before harvest.

The Ethiopia Meteorology Institute disseminates Ten day, monthly and seasonal weather reports in which all the necessary current information's relevant to agriculture are compiled.

We are of the opinion that careful and continuous use of this bulletin can benefit to raise ones agro climate consciousness for improving agriculture-oriented practices. Meanwhile, your comments and constructive suggestions are highly appreciated to make the objective of this bulletin a success.

Director General

EMI

P.O. Box 1090

Tel: 011661-57-79

FAX 00251-11-6625292

E-mail [nmsa@ethionet.et](mailto:nmsa@ethionet.et)

Addis Ababa

## SUMMARY

During the first dekad of January 2026, according to the agro meteorological analysis, during the last dekad of December, the Bega season dry, sunny and windy weather condition prevailed across most part of the country. This condition had a positive impact for the Meher crop growing areas toward assisting the on-going post-harvest activities. Following on the prevailed dry condition some high land areas of north eastern, central and eastern parts of the country was somehow experiencing low night and morning temperatures. which condition This low temperature had minor effect on the growth of irrigated crops, fruit, vegetables as well as horticulture plants. On the other hand, parts of southern and south-western of the country received light to moderate moisture. This situation in turn might favour toward satisfying the daily water need of perennial crops and the provision of pasture and drinking water in some extent for pastoral and agro-pastoral communities.

During the second dekad of January 2026, the dry moisture condition was observed in most parts of the country. The dry moisture condition had create favourable conditions for post-harvesting activities in Meher crop growing areas of the country. However, the observed cold temperatures during night and morning was increased especially in the northeast, east, central and southern highlands of the country, which condition had minor effect on the growth of irrigated crops, fruit, vegetables and perennial plants. On the other hand at the end of the dekad light to moderate moisture was observed over western and central parts of the country. This situation in turn might favor toward satisfying the daily water need of perennial plants and the provision of pasture and drinking water in some extent for pastoral and agro-pastoral communities and benefit to early land preparation of the coming Belg season.

## WEATHER ASSESSMENT

### 1.1. Rainfall amount (11 – 20 January, 2026)

During the first dekad of January, 2026, pocket areas East Wellega, Sidama and Gurage zone received 5-25 mm of rainfall. The rest parts of the country were dominantly dry or less than 5 mm of rainfall conditions.

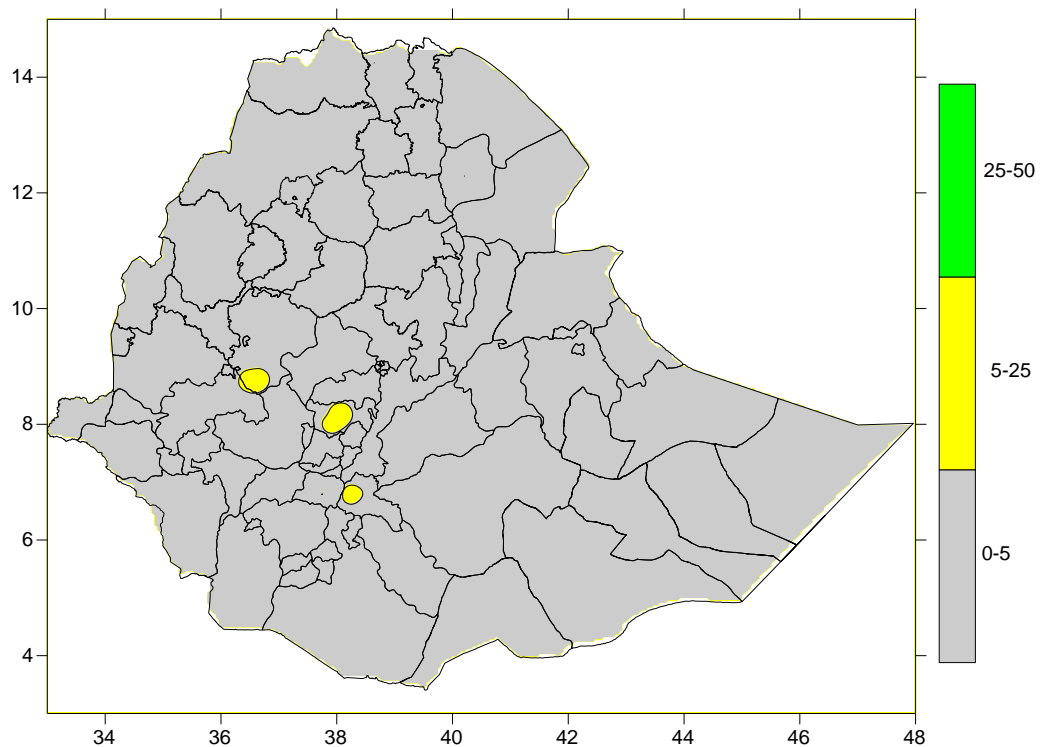


Figure 1. Rainfall distribution in mm (11- 20, January, 2026)

## 1.2. Rainfall Anomaly (11 – 20 January, 2026)

During the second dekad of January, 2026, all over the country below normal rainfall conditions were dominated except pocket areas of East Gojam, East Wellega, Sidama and Gurage zone experienced normal to above normal rainfall.

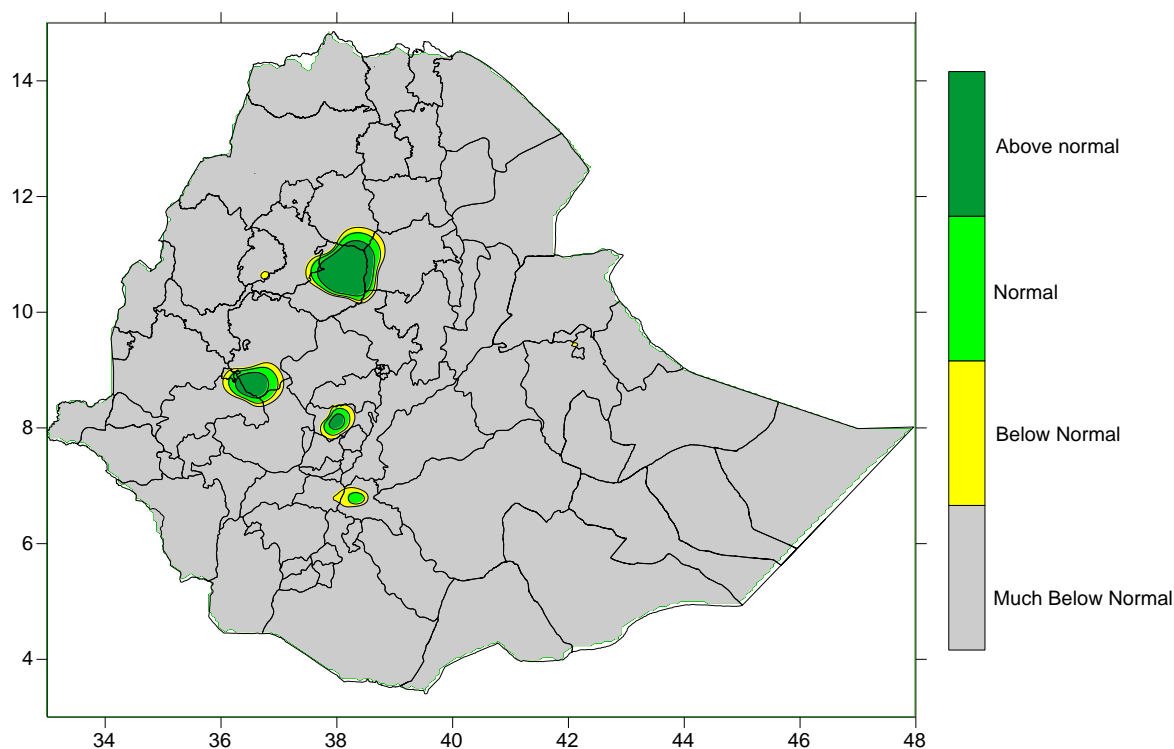


Figure 2: Percent of normal rainfall distribution (11 – 20 January, 2026)

### Explanatory notes for the Legend

- < 50-Much below normal
- 50-75%-Below normal
- 75-125%- Normal
- > 125% - Above normal

### 1.3. Moisture Condition (11 – 20 January, 2026)

During the second dekad of January, 2026, all over the country the dry moisture conditions were dominated except pocket areas of east Wellega, Ilubabor and Gurage zone received moderately dry to moist moisture condition during the dekad.

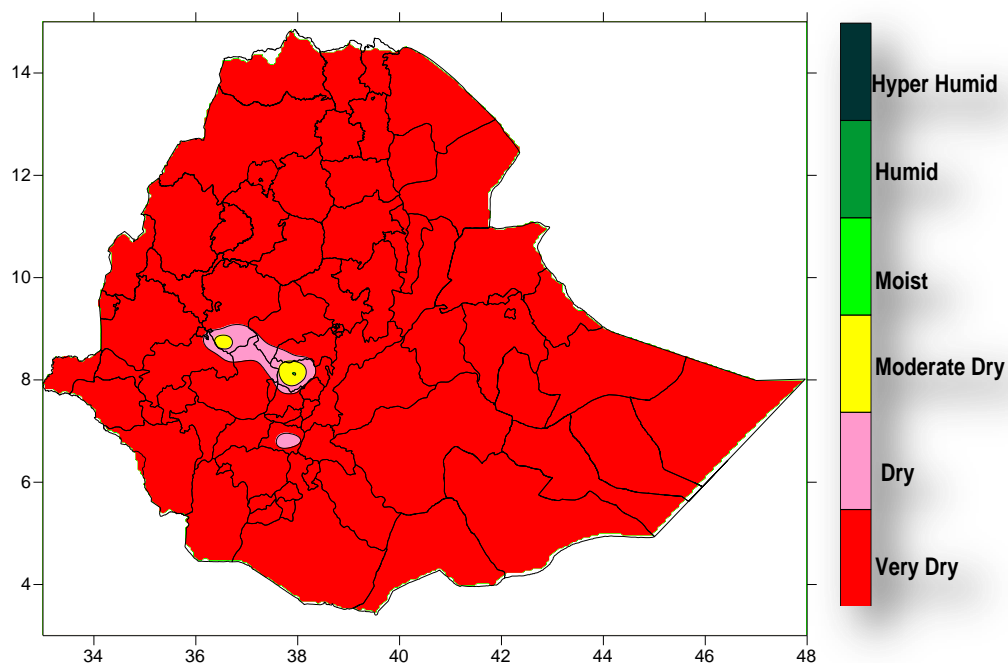


Figure.3. Moisture Status (11 – 20 January, 2026)

## 2. AGROMETEOROLOGICAL CONDITIONS AND IMPACT ON AGRICULTURE

### 2.1. VEGETATION CONDITION AND IMPACT ON AGRICULTURE

During the second dekad of January 2026, the moisture condition was decreased all over the country particularly Bega rain benefiting areas including south-western, western and south-eastern parts of the country. Due to this the NDVI Fig.4 (the green plant coverage) and RLWRSI is slightly decreased over Bega rainfall benefiting areas from dekad to dekad. The decreased in the green plant coverage and Rangeland indicated over Bega rain benefiting pastoral and agro pastoral community that might impacts the availability of pasture and drinking water.

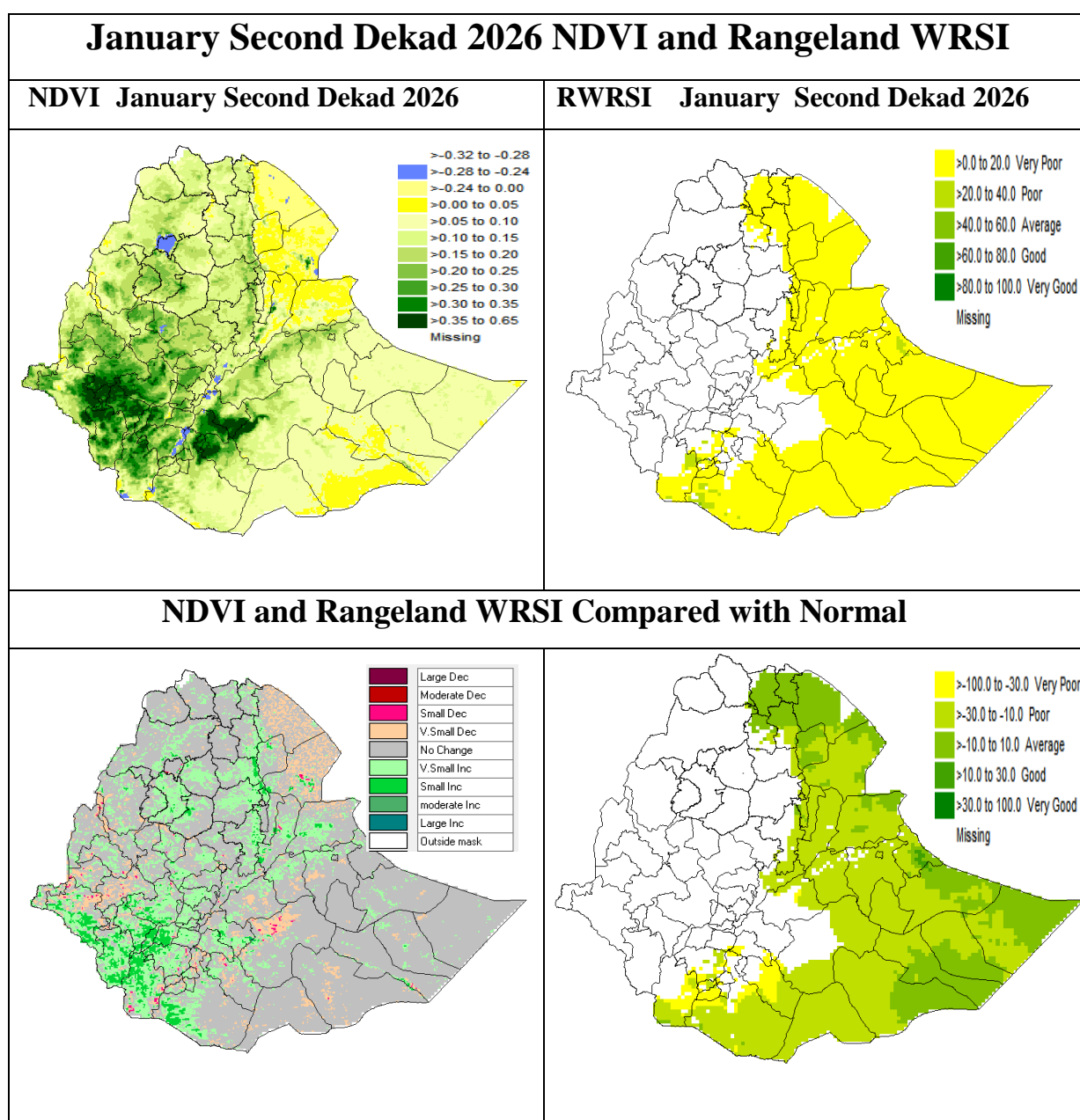


Fig.4. NDVI and Rangeland WRSI (%) and Compared to Normal 11 – 20 January, 2026

## **2.2. EXPECTED WEATHER IMPACT ON AGRICULTURE DURING THE COMING THIRD DEKADE OF JANUARY 2026**

In the coming third dekad of January 2026, the Bega season dry, sunny and wind weather condition couple with cold night and morning is likely to be continued in the coming dekad. The probable dry weather condition up to the end of the month is likely to favour for completing the on-going post-harvest activities. However related with the dry, windy and cloud free condition might encourage cold weather at night and morning time during the dekad over north, northeast, eastern and southern highland areas of the country. This condition is likely to be detrimental negative effect on the performance of vegetables, fruits and perennial plants. Therefore, farmers are advised to be ready to take the necessary measures so as to maintain the plant environment as warm as possible. On the other hand the expected to get little amount of rain during the dekad on some parts of Belg producing areas of the country might be favourable for Bega season crops and perennial plants as well as to ensure the availability of pasture and drinking water for the pastoral and agro pastoral community. In addition, the predicted rain supposed to play a significant role toward the improvement of soil moisture and hence for land preparation for the coming Belg season.

### **3. DEFINITION OF TERMS**

**ABOVE NORMAL RAINFALL:** - Rainfall in excess of 125% of the long-term mean

**BELOW NORMAL RAINFALL:** - Rainfall below 75 % of the long-term mean.

**NORMAL RAINFALL:** - Rainfall amount between 75 % and 125 % of the long-term mean.

**BEGA:** - It is characterized with sunny and dry weather situation with occasional falls. It extends from October to January. On the other hand, it is a small rainy season for the southern and south eastern lowlands under normal condition. During the season, morning and night times are colder and daytime is warmer.

**BELG:** - Small Rainy season that extends from February to May and covers southern, central, eastern and north-eastern parts of the country.

**CROP WATER REQUIREMENTS:** - the amount of water needed to meet the water loss through evapotranspiration of a disease-free crop, growing under non-restricting soil conditions including soil water and fertility.

**DEKAD:** - First or second ten days or the remaining days of a month.

**EXTREME TEMPERATURE:** - The highest or the lowest temperature among the recorded maximum or minimum temperatures respectively.

**ITCZ:** - Inter-tropical convergence zone (narrow zone where trade winds of the two hemispheres meet).

**KIREMT:** - Main rainy season that extends from June to September for most parts of the country with the exception of the south-eastern lowlands of the country.

**RAINY DAY:** - A Day with 1 or more mm of rainfall amount

