

# Ethiopian Meteorology Institute

## Health-Meteorology Bulletin

**The product of  
Biometeorology and  
insurance desk**

**Monthly Bulletin**

**Volume:** 6

**Issued data:** 01/07/2025

**Valid until:** 31/08/2025

**July 2025**

**©Ethiopian Meteorology  
Institute**

**Tell:** 251(0)11 6615779

**Fax:** 251(0)11 6625292

**P.O.Box** 1090

**Website:**

<http://www.ethiomet.gov.et/>

**Telegram:**

<https://t.me/BiometService>



## Table of Contents

<b>I.</b>	<b>Foreword .....</b>	<b>3</b>
<b>II.</b>	<b>Assumptions .....</b>	<b>4</b>
i.	Malaria .....	4
ii.	Human heat index: .....	4
iii.	Cattle heat index: .....	4
1.	Weather impact Assessment on Health for June 2025 .....	5
1.1	Malaria prone areas during June 2025 .....	5
1.2	Climate comfort Conditions.....	5
1.2.1	Comfortability for Human .....	5
1.2.2	Comfortability for Cattle .....	5
2.	Expected Weather Impact on Health for first dekad of July 2025 .....	6
2.1	Expected Mosquito breeding areas .....	6
2.2	Temperature Humidity Index.....	6
2.2.1	Human Comfort Condition .....	6
2.2.2	Cattle Comfort Condition .....	6
3.	Summary .....	7
4.	Advisory .....	7

## I. Foreword

This "Climate Information for the Health Sector" Bulletin has been designed to convey essential information regarding the monitoring of human comfort conditions based on the analysis of temperature and humidity data and also for the monitoring of Malaria outbreak areas based on the analysis of temperature and precipitation data. Since the monitoring of temperature and rainfall over a given area can be used to assess the likelihood of outbreak of Malaria with a lag of two months, this information can be an important for early warning tool if used judiciously.

The major objective of this bulletin is in line with the Ethiopia Meteorological Institute strategy of diversifying climate application products to the basic developmental sectors (such as the Health, the water, the agricultural sector etc...). This bulletin can be a very important source of information to Health professionals engaged in the monitoring of Public Health, to Tourism Agents and institutions who advise tourists regarding the comfort conditions of the places to be visited by the tourists and to the researcher who is interested in the field of Bio-Climatology.

We have the opinion that careful and continuous use of this bulletin can benefit to the improvement of early warning and preparedness in the Health sector.

Meanwhile, your comments and constructive suggestions are highly appreciated to make the objective of this bulletin a success,

This same bulletin can be accessed online at: [http://www.ethiomet.gov.et/bulletins/health\\_bulletins](http://www.ethiomet.gov.et/bulletins/health_bulletins)

Director General  
Ethiopia Meteorology Institute  
P.O.Box 1090  
Tel: 251(0)11 6615779  
FAX 251(0)11 6625292  
Web: [www.ethiomet.gov.et](http://www.ethiomet.gov.et)  
Addis Ababa, Ethiopia

## II. Assumptions

**i. Malaria:** According to the International Research Institute for Climate and Society, (IRI), the predicted conditions of rainfall, temperature, and relative humidity are used in determining the degree of incidence for malaria.

- When rainfall is above 80 mm, the temperature is between 25°C and 32°C, and relative humidity is greater than 80%, the region is at high risk and is placed under high incidence.
- When the temperature is between 20°C and 25°C, relative humidity is between 70 and 80%, and rainfall is above 80 mm, then moderate incidence is advised.
- Low incidence for malaria is issued when the temperature is in the range of 18°C-20°C, relative humidity is 60 - 70% and rainfall is above 80 mm.
- No incidence is required when the temperature is less than 18°C, relative humidity less than 60%, and rainfall amount below 80 mm.

Based on these, climate variables have *a one to two months* postponed (delayed) effect on the spread of malaria.

**ii. Human heat index:** is a measure of how hot it feels when relative humidity is factored with the actual air temperature. The levels of caution for heat index are classified as follows:

- Cold stress when THI is <14, *Asthma, Pneumonia, Common Cold and flu*
- Comfortable when THI is 14-21, *pleasanter*
- Moderate when THI is 21-26, *No more effects*
- Heat stress when THI is >26, *heat stroke, heat cramps, hyperthermia, respiratory and cardiovascular diseases*

**iii. Cattle heat index:** The climatic condition for Cattle is a measure that accounts for the combined effects of environmental temperature and relative humidity on cattle. The level of heat stress for cattle classified as follows:

- Not Stressed when THI is <68, *free from heat stress*
- Stressed threshold when THI is 68 – 71, *impact less stress starting*
- Mild stress when THI is 72 – 79, *stress begins and calf rate affected*
- Moderate stress when THI is 80 – 89, *Milk production affected*
- Severe stress when THI is 90 – 99, *very significant losses in milk production*
- Extremely stress when THI is >100, *ultimate dead of cows*

# 1. Weather impact Assessment on Health for June 2025



## 1.1 Malaria prone areas during June 2025

During June 2025 monthly climate assessment for malaria breeding and transmission, most southern and western parts of the country were suitable. Most parts of western and Southern Oromia zones, all zones of South, South west, central Ethiopia and Sidama regions, Aghuak and majaning zones of Gambela, Metekel, Assossa, Kamashi, Tongo Sp. zones of Benishangul Gumuz, east Gojam zones of Amhara region were some parts of the country that were suitable to malaria transmission areas over the country as illustrated in Figure 1

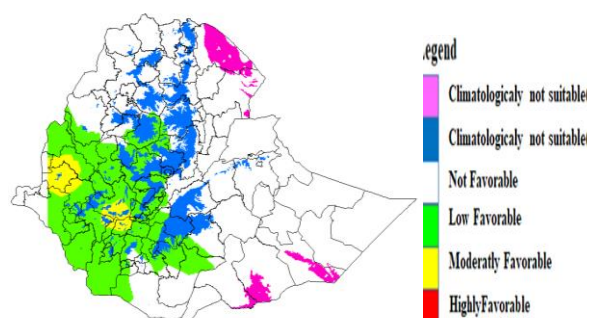


Figure 1: Malaria Prone areas

## 1.2 Climate comfort Conditions

### 1.2.1 Comfortability for Human

During June 2025, for human's day to day activity, the climate conditions were very **pleasant** in most highland parts of the country. But in some lowland parts of Gambela, Afar, Northern and Southern Somali, Metema in Amhara and Meteke zones in

Benishangul regions were under in **heat stress** conditions as shown in figure 2.

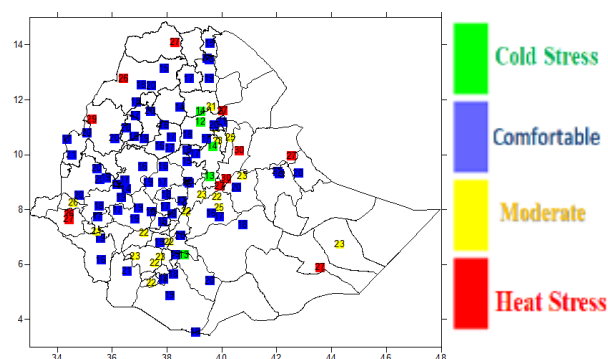


Figure 2: Human comfort index

### 1.2.2 Comfortability for Cattle

Similar to the human's comfortability condition, there were no-significant heat stress climate conditions that impact the cattle's productivity, but from moderately heat stress to mild heat stress were experienced in Afar, southern & Northern Somali, western Amhara, Benishangul and Gambela regions of the country as shown in figure 3.

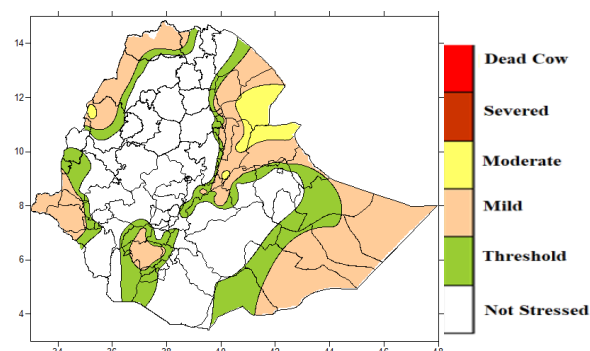


Figure 3: Cattle Comfort index





## 2. Expected Weather Impact on Health for first dekad of July 2025



### 2.1 Expected Mosquito breeding areas

In the coming first Ten days of July 2025, the climate condition for malaria breeding and transmission will be suitable over Gambela region, Tigray region, Assosa, Metekel, Kemashi komo special in Benishangul, in Oromia a few places of East Wellega, West Wellega, Kelem wellega, Illu Aba Bora, Buno bedle, Horo Guduru wellega, Jimma, West Showa, East Showa, Arsi, West Arsi, west, east Hararghe, and west Guji, in Amhara region Awi, West Gonder, North Gonder, Central Gonder and South Gonder, North Wollo, South Wollo and Wag himera and few places of South Ethiopia, South west Ethiopia, and Central Ethiopia region of the country as illustrated as red in figure 4.

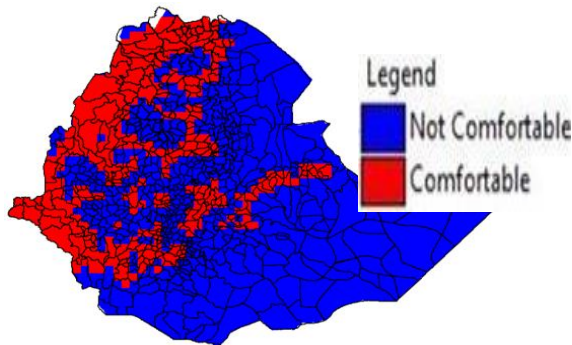


Figure 4: Expected malaria prone areas

### 2.2 Temperature Humidity Index

#### 2.2.1 Human Comfort Condition

For the coming July first ten days, there will be pleasant weather conditions over most parts of the country except Afar, Southern & Northern Somali and southern parts of South Ethiopia, Gambela, western Amhara and adjoining areas of Benishangul Gumuz regions, which will be partially (50%) to fully uncomfortable for humans day-to-day activity (sign of heat stress expected) as looking in figure 5.

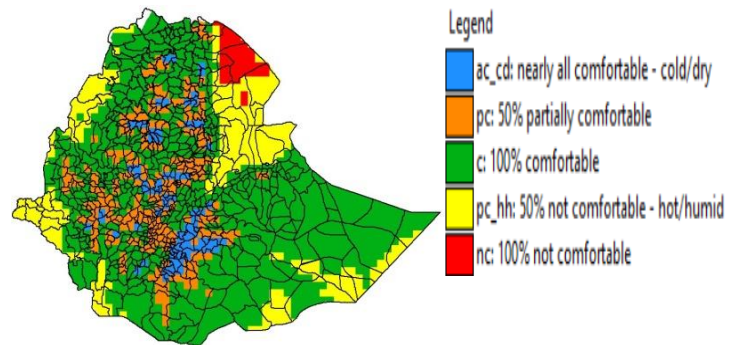


Figure 5: Expected Human comfort index

#### 2.2.2 Cattle Comfort Condition

Like the human comfort, cattle's comfort index for the next ten days of July first ten days will have moderately heat stress conditions over Afar regions while other most low land border part of the country will experience with none significant heat stress (mild-stress) conditions as shown in Figure 6.

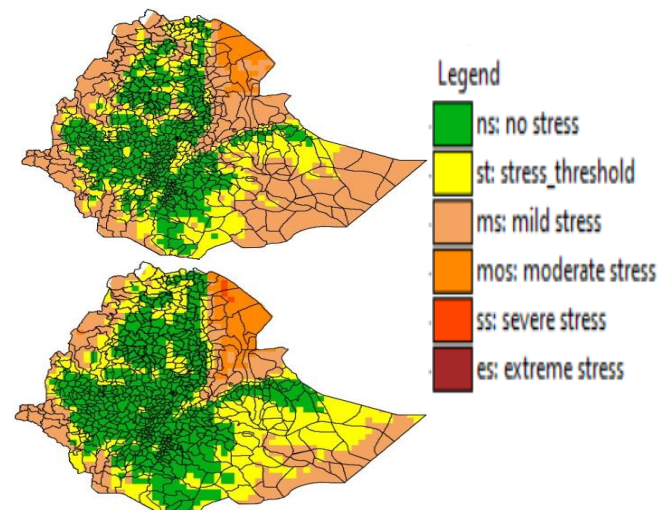


Figure 6: Expected Dairy (**Top**) and Non-Dairy (**Bottom**) Cattle comfort



### 3. Summary

Based on the climate-health analysis for June 2025 month, it has been observed that, there were **low-to-moderate** suitable climate conditions to the breeding and transmission of malaria in the country. Similarly, over the next 10 days of July 2025 first dekad, there will suitable climate condition for the breeding and development mosquitoes over Southern-western, Western and Northern half of the country.

In terms of climate comfortability conditions, most parts of the country have experienced pleasant conditions for both humans and livestock. Looking ahead to the next 10 days of July 1<sup>st</sup> decade, the low-lying border areas of the country, especially Afar, southern & northern Somali, Gambela, Metema and Metekl zones in Amhara and Benishangul region and South Ethiopia region will experience moderately (no-significance impact) heat stress, which will affect both humans and cattle.

### 4. Advisory



Use and implement the following recommendations in places that are favourable for the development of malaria and other vector-borne related diseases;

- Attention to any incidence, especially for malaria disease in such favourable areas
- Controlling measures and activity are advised
- Reducing the environmentally aggravating condition
- Awareness creation campaign to the community and sharing of the climate-health update
- Avoid any exposure of the community to mosquitoes by ensuring clean environment and using Mosquitoes nets.

