



Monthly Hydro Meteorology Bulletin

Forward

This Monthly Hydro Meteorological Bulletin is prepared and disseminated by the Ethiopia Meteorological institute (EMI). The ultimate objective of producing and disseminating this bulletin is to inform all level decision makers with the updated and relevant hydro meteorological information. This monthly Bulletin reviews the April 2025-month climate condition and its impacts over the river catchment across the country and highlights the May, 2025 climate outlook along with the likely impact over the water dams and the rivers basins.

The information contained in this bulletin is believed to assist the water professionals for planning the capacity expansion of reservoirs, water supply, ecosystem restoration as well as rehabilitation of existing systems including dams, irrigation, canals, pumps, wetlands and the likes. In addition to the aforementioned benefit the bulletin also reveals the aridity levels of each basin, extremes heavy rainfall events and areas where significant amount of moistures loss through evapotranspiration. In the impact outlook section of the bulletin it provides the likelihood of the climate in the coming month and its potential impact over various aspect of the river basins including the hydraulic structures such as culverts, bridges, reservoir spillways, road embankments and dikes. It also indicates the measures need to be taken as the early actions so as to reduce the possible negative impact of the upcoming month climate condition. Meanwhile, your comments and constructive suggestions are highly appreciated to make the objectives of this bulletin a success.

[EMI]





1. Introduction	4
1.1 Monthly Hydro Meteorological Assessments	5
1.1.1 Monthly aridity Climatology over the Ethiopian River Basin.....	5
1.1.5 Distribution of Heavy fall (>30mm a day)	9
2.1. Expected weather impact on water resource during the coming May, 2025	11



1. Introduction

The provision of hydro meteorological services can contribute a significant role toward water resource management and socio-economic development. both surface water and groundwater management are essentially linked to climate variability. Therefore, the provided climate information and knowledge in this monthly hydro meteorological bulletin have a critical importance for efficient, equitable and sustainable development and management of the national water resources and for coping with any climate related risks. The information illustrates the impact of previous month climate on each and every water basins and the associated climate risks observed during the month under review. In addition to the previous month impact assessment, the bulletin also provided the expected climate condition for the coming months and its impact on the water resource. The design of water-use and flood-control facilities, mainly dams and reservoirs, is frequently based on these analyses. Estimating the likelihood of precipitation, the distribution of precipitation and the rate of evaporation in location and time, the heavy rainfall and the subsequent

Runoff, extreme temperature and wind are among issues that hydro meteorologists are concerned with.



1.1 Monthly Hydro Meteorological Assessments

1.1.1 Monthly aridity Climatology over the Ethiopian River Basin

In the normal climate moisture condition of April in the south, west, south west, central, and south Eastern river basin will gets sub humid to very wet moisture condition. In line with this, most parts of, Omo gibe, Baro Akobo, Rift Valley, Genale Dawa, Awash, Wabisheble, and Abay, Ogaden, upper Tekeze, Afar Danakil receive significant amount of moisture. The rest Lower Tekeze, and western middle Abay basins will be Arid conditions.

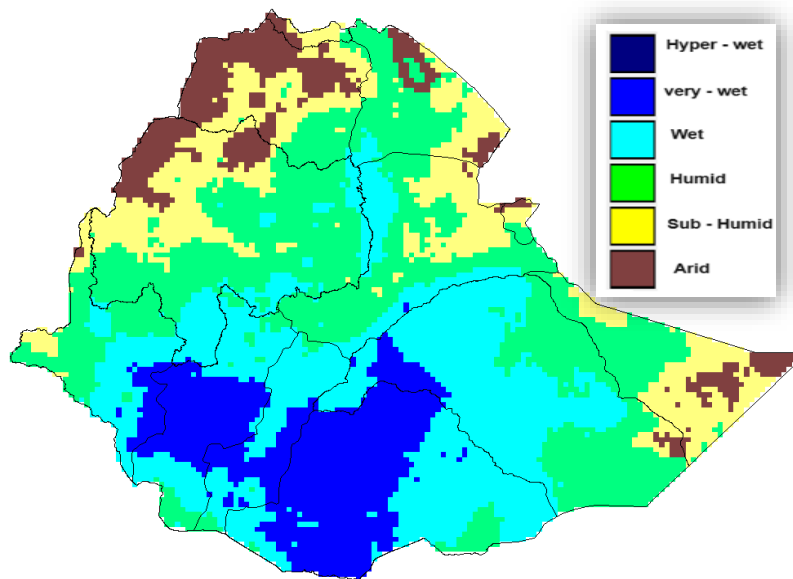


Figure 1. Monthly Moisture Climatology over the river basin during April



1.1.2 April 2025 Rainfall Assessment over the River Basins

April monthly rainfall distribution is observed across the south, south western, south Eastern and central half basins of the country. According to this, few parts of upper Omo Gibe, Central Rift valley, Genale Dawa, middle Abay, middle and lower wabi shebele and few part of upper Awash basins got 50-108 mm of rainfall and middle rift valley, most parts of Genale Dawa, upper and middle Omo gibe and upper Baro Akobo, basins have experienced 108-161 mm rainfall, Additionally Middle and Lower Omo Gibe, Lower Rift valley, and Genale Dawa have experienced 162-218 mm. Therefore this situation was positive impact for surface water specially belg benefiting River basins such as Omo Gibe, Rift valley, Genale Dawa, and wabi shebele.

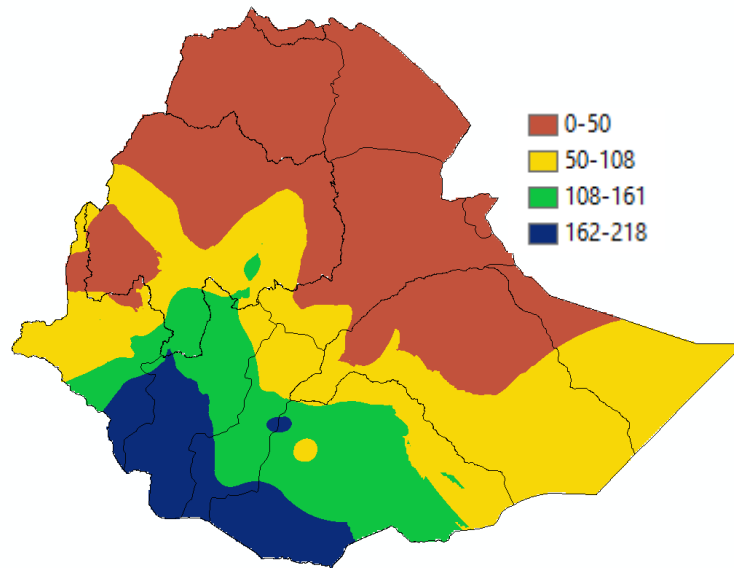


Figure 2 April monthly Total rainfall over Ethiopian River Basin.

1.1.3 Monthly Mean Temperature over the River Basin

In April month daily average temperature 17-20 oC performed few area of upper Tekeze and few area upper eastern Abay and also most of Tekeze, most of upper and middle Abay, upper Baro Akobo, the margin and upper Omo Gibe, some pocket area of upper Rift Valley, upper Wabi shebele, Awash and Genale Dawa, experienced monthly average temperatures were 21-23. Most of wabi shebele, Genale Dawa, Rift valley, Omo Gibe, Awash, Afar Danakil, Aysha, Ogaden basins were 23-25 oC daily Average Temperature, and greater than 26 oC However Few place of Lower Wabi shebele, and pocket area of lower eastern Awash Afar Danakil and Baro Akobo were average daily temperature received .



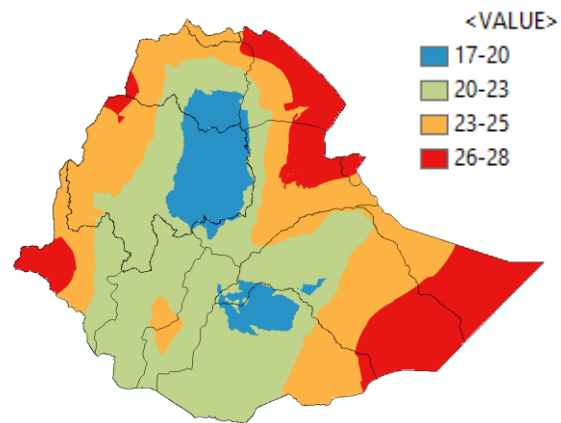


Figure 3 April monthly mean temperature over Ethiopian River Basin

1.1.4 Assessments of Aridity Index during the month of April

- During April, most parts of Abay, Baro Akobo, Omo Gibe, Rift Valley, Genale Dawa, Wabisheble, upper and middle Awash, and Tekeze have experienced humid to very wet moisture condition. Likewise, since the received moisture over most parts of Belg rain benefiting catchment are well exceeded from the potential evapotranspiration of the month, it favours the available of ample moisture on the surface and ground water. On the other hand, arid moisture condition was prevailed across most part of the north western half river catchments.



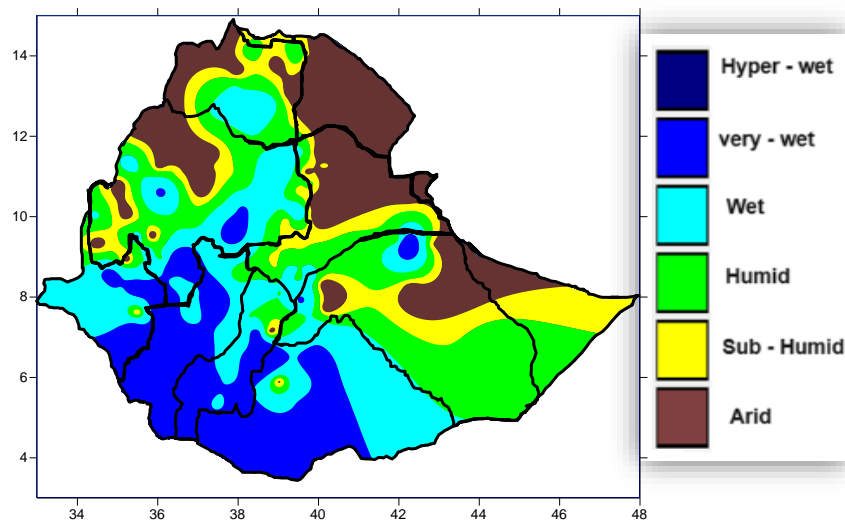


Figure 4. March monthly Aridity Index condition over the river basins

1.1.5 Distribution of Heavy fall (>30mm a day)

April month observed heavy fall frequency over southern, and central station observed one to four days in this month. Maximum frequency Bore station have recorded four day frequency, in this month maximum day heavy fall was 100.0 mm at Bore station over basin Genale Dawa basin. Hence increased water holding capacities for dams. Spatially belg rainfall benefiting areas.



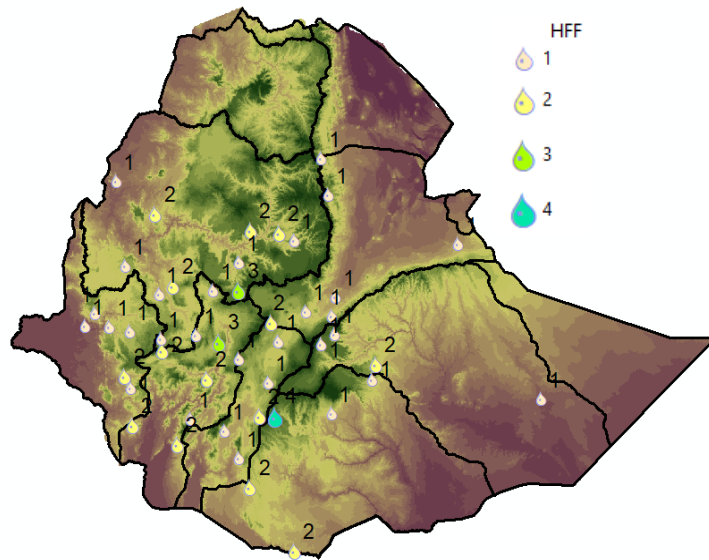


Figure 5 Heavy fall Frequency during the April month over Ethiopian River Basin



2.1. Expected weather impact on water resource the coming May, 2025

The next month regarding impact of weather condition on water resource will be humid to wet over most of the Baro Akobo, Omo Gibe, Genale Dawa, central Rift Valley, and Wabi shebele and Abay basins. This situation will be great positive side in terms of enabling the irrigation and power generation dams, Inline to this recommended arrangement to collect and store the available rain water, especially kiremt non benefit area, On the other hand, Aysha, Mereb gash, and Ogaden will be partial dry weather condition.



